

LEA Name : Methacton SD
Address : 1001 Kriebel Mill Rd
Eagleville , PA 19403

County : Montgomery
AUN Number : 123465303
LEA Type : SD

Annual Financial Report Accuracy Certification Statement

For Fiscal Year Ending
6/30/2019

Pennsylvania Department of Education
&
Office of Comptroller Operations

PDE-2056: Intermediate Unit
PDE-2057: School District, AVTS/CTC, Charter School,
and Special Program Jointure


CERTIFICATION: By signing this page I agree that the electronic data submitted is a complete and accurate statement of the financial operations and status of the local education agency for the fiscal year. It has been prepared in accordance with generally accepted accounting principles and established Commonwealth of PA reporting guidelines.



Chief School Administrator Signature



Date



Board Secretary Signature



Date

Danielle Penza

Contact Person

dpenza@methacton.org

Contact Person E-mail Address

(610)489-5000

Ext :15005

Contact Person Telephone Number

(610)489-5019

Contact Person Fax Number

Audit Certification
Annual Financial Report:
For Fiscal Year Ending **6/30/2019**
(Pursuant to PA School Code Section 218(b))

LEA Name : Methacton SD
AUN Number : 123465303
County : Montgomery

Audit Certification Due: 12/31/2019

This certification is applicable to the Annual Financial Report data submitted
through the Consolidated Financial Reporting System on: 10/24/19
Date

Auditing Firm:

Maillie LLP


CERTIFICATION: By signing this page I agree that the financial statements of the school have been properly audited as noted above pursuant to Article XXIV, and in the auditor's professional opinion, the Annual Financial Report (PDE-2057) submitted on the date referenced is materially consistent with the audited financial statements.

Chief School Administrator


Signature

10/24/2019
Date

Board Secretary


Signature

10/24/19
Date

Danielle Penza

Contact Person

dpenza@methacton.org

Contact Person E-mail Address

(610)489-5000

Ext :15005

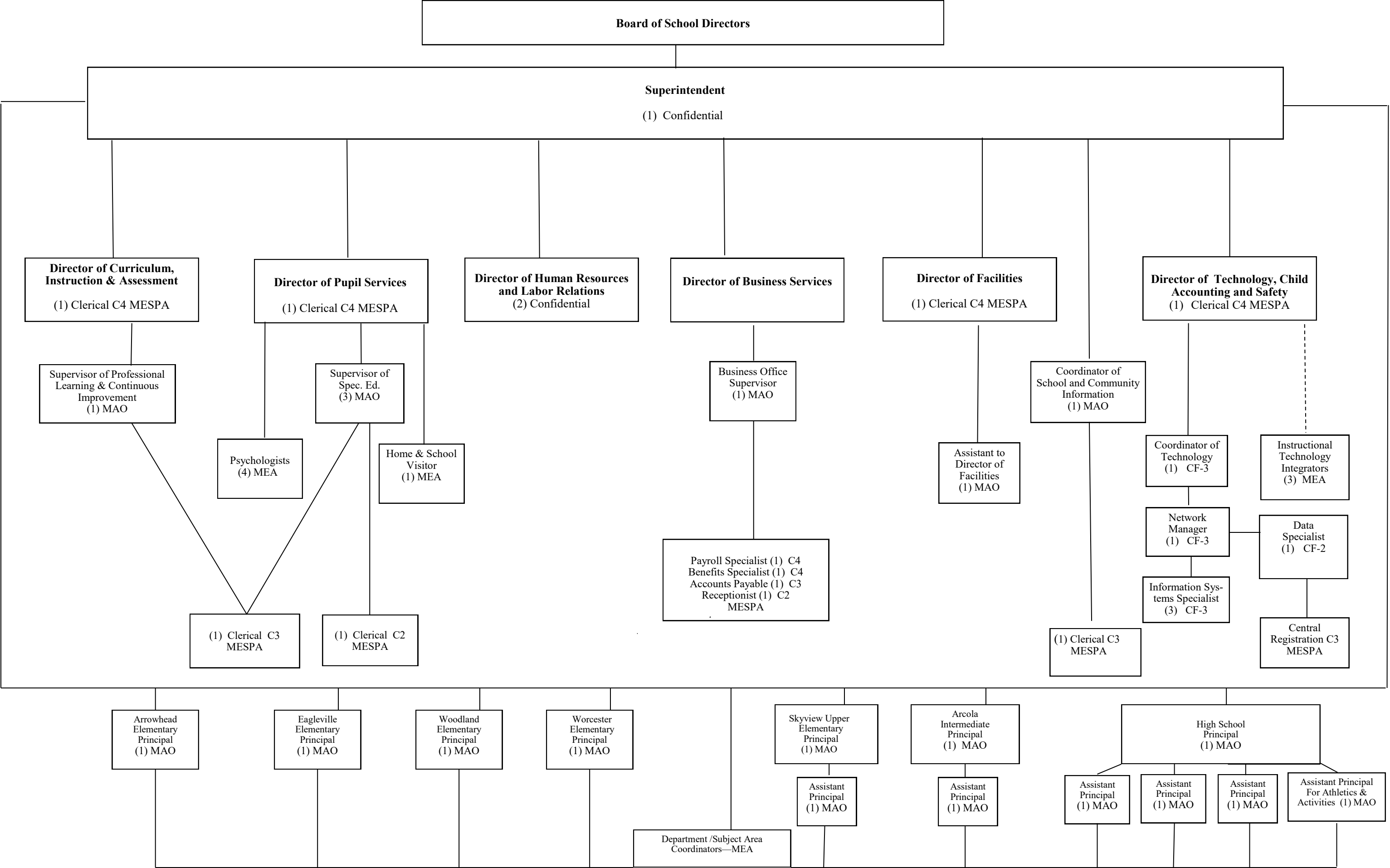
Contact Person Telephone Number

(610)489-5019

Contact Person Fax Number

METHACTON SCHOOL DISTRICT
ORGANIZATIONAL CHART

Proposed for Board approval 11/27/2018



<u>Val Number</u>	<u>Description</u>	<u>Justification</u>
50430	SESS - 2160 Social Work Services: SESS Schedule amounts for Special Education vary from prior year by 40% or more. Correct the data or enter a justification. SESS Schedule 2160: \$20,120.00 Prior Year SESS Schedule 2160: \$10,218.50	Established a REACH - intensive therapeutic support sevices program at Arcola Intermediate in November, 2018.

LEA : 123465303 Methacton SD

Printed 10/24/2019 11:17:03 AM

Amounts Expressed in Whole Dollars		<u>General Fund</u> <u>(10)</u>	<u>Public Purpose Trust</u> <u>(27)</u>	<u>Other Compt Approved</u> <u>(28)</u>	<u>Athletic / Activity</u> <u>(29)</u>	<u>Capital Reserve (690.</u> <u>1850)</u> <u>(31)</u>
Assets And Deferred Outflows Of Resources						
Assets						
0100	Cash and Cash Equivalents	21,849,236				
0110	Investments					
0120	Taxes Receivable	2,092,234				
0130	Due From Other Funds	375,087				
0141	Due From Other Governments					
0142	State Revenue Receivable	3,409,624				
0143	Federal Revenue Receivable	776,610				
0145	Other Intergovernmental Revenue Receivable					
0146	Due from Primary Government					
0147	Due from Component Unit					
0150	Other Receivables	96,106				
0170	Inventories					
0180	Prepaid Expenses (Expenditures)	1,604,086				
0190	Other Current Assets					
Total Assets		\$30,202,983				
0910	Deferred Outflows of Resources					
Total Assets And Deferred Outflows Of Resources		\$30,202,983				

LEA : 123465303 Methacton SD

Printed 10/24/2019 11:17:03 AM

Amounts Expressed in Whole Dollars		<u>Capital Reserve (1431)</u> <u>(32)</u>	<u>Other Capital Projects</u> <u>Fund</u> <u>(39)</u>	<u>Debt Service</u> <u>(40)</u>	<u>Permanent</u> <u>(90)</u>	<u>Total Governmental</u> <u>Funds</u>
Assets And Deferred Outflows Of Resources						
Assets						
0100	Cash and Cash Equivalents		2,148,486			23,997,722
0110	Investments					
0120	Taxes Receivable					2,092,234
0130	Due From Other Funds					375,087
0141	Due From Other Governments					
0142	State Revenue Receivable					3,409,624
0143	Federal Revenue Receivable					776,610
0145	Other Intergovernmental Revenue Receivable					
0146	Due from Primary Government					
0147	Due from Component Unit					
0150	Other Receivables					96,106
0170	Inventories					
0180	Prepaid Expenses (Expenditures)					1,604,086
0190	Other Current Assets					
Total Assets			\$2,148,486			\$32,351,469
0910	Deferred Outflows of Resources					
Total Assets And Deferred Outflows Of Resources			\$2,148,486			\$32,351,469

LEA : 123465303 Methacton SD

Printed 10/24/2019 11:17:03 AM

Amounts Expressed in Whole Dollars		<u>General Fund</u> <u>(10)</u>	<u>Public Purpose Trust</u> <u>(27)</u>	<u>Other Compt Approved</u> <u>(28)</u>	<u>Athletic / Activity</u> <u>(29)</u>	<u>Capital Reserve (690.</u> <u>1850)</u> <u>(31)</u>
Liabilities And Deferred Inflows Of Resources And Fund Balances						
Liabilities						
0400	Due to Other Funds	10,947				
0411	Due to Other Governments					
0412	Due to Primary Government					
0413	Due to Component Unit					
0420	Accounts Payable	1,672,125				
0430	Contracts Payable					
0440	Current Portion of Long-Term Debt	136,476				
0450	Short-Term Payables					
0461	Accrued Salaries and Benefits	3,960,787				
0462	Payroll Deductions and Withholding	4,638,379				
0480	Unearned Revenues	93,568				
0490	Other Current Liabilities	4,848,804				
Total Liabilities		\$15,361,086				
0950	Deferred Inflows of Resources	1,488,557				
Fund Balances						
0810	Nonspendable Fund Balance	1,604,086				
0820	Restricted Fund Balance					
0830	Committed Fund Balance	3,918,801				
0840	Assigned Fund Balance					
0850	Unassigned Fund Balance	7,830,453				
Total Fund Balances		\$13,353,340				
Total Liabilities, Deferred Inflows Of Resources And Fund Balances		\$30,202,983				

LEA : 123465303 Methacton SD

Printed 10/24/2019 11:17:03 AM

Amounts Expressed in Whole Dollars	<u>Capital Reserve (1431)</u> <u>(32)</u>	<u>Other Capital Projects</u> <u>Fund</u> <u>(39)</u>	<u>Debt Service</u> <u>(40)</u>	<u>Permanent</u> <u>(90)</u>	<u>Total Governmental</u> <u>Funds</u>
Liabilities And Deferred Inflows Of Resources And Fund Balances					
Liabilities					
0400 Due to Other Funds		375,087			386,034
0411 Due to Other Governments					
0412 Due to Primary Government					
0413 Due to Component Unit					
0420 Accounts Payable		930,208			2,602,333
0430 Contracts Payable					
0440 Current Portion of Long-Term Debt					136,476
0450 Short-Term Payables					
0461 Accrued Salaries and Benefits					3,960,787
0462 Payroll Deductions and Withholding					4,638,379
0480 Unearned Revenues					93,568
0490 Other Current Liabilities					4,848,804
Total Liabilities		\$1,305,295			\$16,666,381
0950 Deferred Inflows of Resources					1,488,557
Fund Balances					
0810 Nonspendable Fund Balance					1,604,086
0820 Restricted Fund Balance					
0830 Committed Fund Balance					3,918,801
0840 Assigned Fund Balance		843,191			843,191
0850 Unassigned Fund Balance					7,830,453
Total Fund Balances		\$843,191			\$14,196,531
Total Liabilities, Deferred Inflows Of Resources And Fund Balances		\$2,148,486			\$32,351,469

Amounts Expressed in Whole Dollars		<u>General Fund</u> <u>(10)</u>	<u>Public Purpose Trust</u> <u>(27)</u>	<u>Other Compt Approved</u> <u>(28)</u>	<u>Athletic / Activity</u> <u>(29)</u>	<u>Capital Reserve (690.</u> <u>1850)</u> <u>(31)</u>
Revenues						
6000	Revenue from Local Sources	86,135,658				
7000	Revenue from State Sources	23,262,131				
8000	Revenue from Federal Sources	673,618				
Total Revenues		\$110,071,407				
Expenditures						
1000	Instruction	62,305,420				
2000	Support Services	33,546,437				
3000	Operation of Non-Instructional Services	1,512,210				
4000	Facilities Acquisition, Construction and Improvement Services					
5110	Debt Service	9,713,999				
5130	Refund of Prior Year Revenues / Receipts	4,565				
Total Expenditures		\$107,082,631				
Excess (Deficiency) Of Revenues Over Expenditures		\$2,988,776				
Other Financing Sources (Uses)						
9110	Face Value of Bonds Issued					
9120	Proceeds from Refunding of Bonds					
9130	Bond Premiums					
9200	Proceeds from Extended-Term Financing					
9300	Interfund Transfers - IN					
9400	Sale of or Compensation for Loss of Fixed Assets					
9710	Transfers from Component Units					
9720	Transfers from Primary Governments					
9910	Other Financing Sources Not Listed in the 9000 Series					
9990	Insurance Recoveries					
5120	Debt Service – Refunded Bonds					
5150	Bond Discounts					
5200	Interfund Transfers – Out	1,178,803				
5300	Transfers Out to Component Units/Primary Governments					
Total Other Financing Sources (Uses)		(\$1,178,803)				

LEA : 123465303 Methacton SD

Printed 10/24/2019 11:17:10 AM

Amounts Expressed in Whole Dollars		<u>Capital Reserve (1431)</u> <u>(32)</u>	<u>Other Capital Projects</u> <u>Fund</u> <u>(39)</u>	<u>Debt Service</u> <u>(40)</u>	<u>Permanent</u> <u>(90)</u>	<u>Total Governmental</u> <u>Funds</u>
Revenues						
6000	Revenue from Local Sources		233,283			86,368,941
7000	Revenue from State Sources					23,262,131
8000	Revenue from Federal Sources					673,618
Total Revenues			\$233,283			\$110,304,690
Expenditures						
1000	Instruction					62,305,420
2000	Support Services		291,486			33,837,923
3000	Operation of Non-Instructional Services					1,512,210
4000	Facilities Acquisition, Construction and Improvement Services		7,489,036			7,489,036
5110	Debt Service		13,545			9,727,544
5130	Refund of Prior Year Revenues / Receipts					4,565
Total Expenditures			\$7,794,067			\$114,876,698
Excess (Deficiency) Of Revenues Over Expenditures			(\$7,560,784)			(\$4,572,008)
Other Financing Sources (Uses)						
9110	Face Value of Bonds Issued					
9120	Proceeds from Refunding of Bonds					
9130	Bond Premiums					
9200	Proceeds from Extended-Term Financing					
9300	Interfund Transfers - IN		1,176,695			1,176,695
9400	Sale of or Compensation for Loss of Fixed Assets					
9710	Transfers from Component Units					
9720	Transfers from Primary Governments					
9910	Other Financing Sources Not Listed in the 9000 Series					
9990	Insurance Recoveries					
5120	Debt Service – Refunded Bonds					
5150	Bond Discounts					
5200	Interfund Transfers – Out					1,178,803
5300	Transfers Out to Component Units/Primary Governments					
Total Other Financing Sources (Uses)			\$1,176,695			(\$2,108)

Amounts Expressed in Whole Dollars		<u>General Fund</u> <u>(10)</u>	<u>Public Purpose Trust</u> <u>(27)</u>	<u>Other Compt Approved</u> <u>(28)</u>	<u>Athletic / Activity</u> <u>(29)</u>	<u>Capital Reserve</u> <u>(690.</u> <u>1850)</u> <u>(31)</u>
Special And Extraordinary Items						
9920	Special Items – Gains					
9930	Extraordinary Items – Gains					
5520	Special Items – Losses					
5530	Extraordinary Items – Losses					
Net Change In Fund Balances		\$1,809,973				
Fund Balance						
0001	Fund Balance - Beginning of Fiscal Year	11,543,368				
Fund Balance - End Of Year		\$13,353,341				

Amounts Expressed in Whole Dollars		<u>Capital Reserve (1431)</u> <u>(32)</u>	<u>Other Capital Projects</u> <u>Fund</u> <u>(39)</u>	<u>Debt Service</u> <u>(40)</u>	<u>Permanent</u> <u>(90)</u>	<u>Total Governmental</u> <u>Funds</u>
Special And Extraordinary Items						
9920	Special Items – Gains					
9930	Extraordinary Items – Gains					
5520	Special Items – Losses					
5530	Extraordinary Items – Losses					
Net Change In Fund Balances			(\$6,384,089)			(\$4,574,116)
Fund Balance						
0001	Fund Balance - Beginning of Fiscal Year		7,227,280			18,770,648
Fund Balance - End Of Year			\$843,191			\$14,196,532

Amounts Expressed in Whole Dollars		<u>Food Service</u> <u>(51)</u>	<u>Child Care</u> <u>Operations</u> <u>(52)</u>	<u>Other Enterprise</u> <u>(58)</u>	<u>TOTAL</u>	<u>Internal Service</u> <u>(60)</u>
Assets And Deferred Outflows Of Resources						
Current Assets						
0100	Cash and Cash Equivalents	351,133			351,133	
0110	Investments					
0130	Due From Other Funds	10,947			10,947	
0141	Due From Other Governments					
0142	State Revenue Receivable	1,546			1,546	
0143	Federal Revenue Receivable	17,392			17,392	
0146	Due from Primary Government					
0147	Due from Component Unit					
0150	Other Receivables	66			66	
0170	Inventories	22,856			22,856	
0180	Prepaid Expenses (Expenditures)					
0190	Other Current Assets					
Total Current Assets		\$403,940			\$403,940	
Noncurrent Assets						
0211	Land					
0212	Site Improvements (Net)					
0220	Buildings and Building Improvements (Net)					
0230	Machinery, Equipment and Furniture (Net)	85,406			85,406	
0250	Construction in Progress					
0260	Long Term Prepayments					
0290	Other Noncurrent Assets					
Total Noncurrent Assets		\$85,406			\$85,406	
0910	Deferred Outflows of Resources					
Total Assets And Deferred Outflows Of Resources		\$489,346			\$489,346	

Amounts Expressed in Whole Dollars	<u>Food Service</u> <u>(51)</u>	<u>Child Care</u> <u>Operations</u> <u>(52)</u>	<u>Other Enterprise</u> <u>(58)</u>	<u>TOTAL</u>	<u>Internal Service</u> <u>(60)</u>
Liabilities And Deferred Inflows Of Resources And Net Position					
Current Liabilities					
0400 Due to Other Funds					
0411 Due to Other Governments					
0413 Due to Component Unit					
0420 Accounts Payable	109,307			109,307	
0430 Contracts Payable					
0440 Current Portion of Long-Term Debt					
0450 Short-Term Payables					
0461 Accrued Salaries and Benefits					
0462 Payroll Deductions and Withholding					
0480 Unearned Revenues	10,918			10,918	
0490 Other Current Liabilities	48,530			48,530	
Total Current Liabilities	\$168,755			\$168,755	
Noncurrent Liabilities					
0510 Bonds Payable					
0520 Extended-Term Financing Agreements Payable					
0530 Lease-Purchase Obligations					
0540 Accumulated Compensated Absences					
0550 Authority Lease Obligations					
0560 Other Post-Employment Benefits (OPEB)					
0570 Net Pension Liability					
0599 Other Noncurrent Liabilities					
Total Noncurrent Liabilities					
Total Liabilities	\$168,755			\$168,755	
0950 Deferred Inflows of Resources					
Net Position					
0791 Net Investment in Capital Assets	85,406			85,406	
0008 Restricted Net Position (0792 – 0798)					
0799 Unrestricted Net Position	235,185			235,185	
Total Net Position	\$320,591			\$320,591	
Total Liabilities And Deferred Inflows Of Resources And Net Position	\$489,346			\$489,346	

Amounts Expressed in Whole Dollars	Food Service (51)	Child Care Operations (52)	Other Enterprise (58)	TOTAL	Internal Service (60)
Operating Revenues					
6600 Food Service Revenue	1,094,839			1,094,839	
0071 Charges for Services					
0072 Other Operating Revenue					
Total Operating Revenues	\$1,094,839			\$1,094,839	
Operating Expenses					
100 Personnel Services – Salaries					
200 Personnel Services – Employee Benefits					
300 Purchased Professional and Technical Services					
400 Purchased Property Services					
500 Other Purchased Services	1,388,773			1,388,773	
600 Supplies	90,485			90,485	
740 Depreciation	9,784			9,784	
810 Dues and Fees					
890 Miscellaneous Expenditures					
Total Operating Expenses	\$1,489,042			\$1,489,042	
Operating Income (Loss)	(\$394,203)			(\$394,203)	
Non Operating Revenues (Expenses)					
6500 Earnings on Investments	5,980			5,980	
6920 Contributions and Donations from Private Sources					
6930 Gains or Losses on Sale of Fixed Assets					
6991 Refunds of a Prior Year Expenditure					
7000 Revenue from State Sources	39,253			39,253	
8000 Revenue from Federal Sources	459,506			459,506	
9990 Insurance Recoveries					
820 Claims and Judgments Against the LEA					
830 Interest					
TOTAL Non Operating Revenues (Expenses)	\$504,739			\$504,739	
Income (Loss) Before Contributions And Transfers	\$110,536			\$110,536	

Amounts Expressed in Whole Dollars	<u>Food Service</u> <u>(51)</u>	<u>Child Care Operations</u> <u>(52)</u>	<u>Other Enterprise</u> <u>(58)</u>	<u>TOTAL</u>	<u>Internal Service</u> <u>(60)</u>
Contributions, Transfers, and Special and Extraordinary Items					
5200 Interfund Transfers – Out					
5300 Transfers Out to Component Units/Primary Governments					
5520 Special Items – Losses					
5530 Extraordinary Items – Losses					
9300 Interfund Transfers - IN	2,109			2,109	
9500 Capital Contributions					
9700 Transfers IN From Component Units/Primary Governments					
9920 Special Items – Gains					
9930 Extraordinary Items – Gains					
Change In Net Position	\$112,645			\$112,645	
0002 Net Position - Beginning of Fiscal Year	207,946			207,946	
0003 Accounting Changes / Residual Equity Transfers					
Net Position - End Of Year	\$320,591			\$320,591	

LEA : 123465303 Methacton SD

Printed 10/24/2019 11:17:21 AM

Amounts Expressed in Whole Dollars	<u>Food Service</u> <u>(51)</u>	<u>Child Care Operations</u> <u>(52)</u>	<u>Other Enterprise</u> <u>(58)</u>	<u>TOTAL</u>	<u>Internal Service(60)</u>
Cash Flows From Operating Activities					
0011 Cash Receipts From Users	1,095,495			1,095,495	
0012 Cash Receipts From Assessments Made to Other Funds					
0013 Cash Receipts From Earnings on Investments					
0014 Cash Receipts From Other Operating Revenue					
0015 Cash Payments To Employees For Services					
0016 Cash Payments For Insurance Claims					
0017 Cash Payments To Suppliers For Goods and Services	1,458,019			1,458,019	
0018 Cash Payments For Other Operating Expenses					
Net Cash Provided By (Used For) Operating Activities	(\$362,524)			(\$362,524)	
Cash Flows From Non-Capital Financing Activities					
0021 Receipts From Local Sources - 6000					
0022 Receipts From State Sources - 7000	43,104			43,104	
0023 Receipts From Federal Sources -8000	504,913			504,913	
0024 Notes and Loans Received (Repaid)					
0025 Interest Paid on Notes/Loans - 5100-830					
0026 Operating Transfers In (Out)/Residual Equity Trans					
0027 Operating Transfers In (Out) Primary Government / Comp Unit	2,109			2,109	
0028 Receipts From Refund of Prior Year Expenditures - 6991					
0029 Special and Extraordinary Gains (losses)					
0030 Receipts from Insurance Recoveries -9990					
Net Cash Prov By (Used for) Non-Capital Financing Activities	\$550,126			\$550,126	
Cash Flows From Capital and Related Financing Activities					
0031 Payments For Fac Acq, Const, and Imp - 4000	(32,821)			(32,821)	
0032 Gain / (Loss) on Sale of Fixed Assets - 6930					
0033 Proceeds From Extended Term Financing - 9200					
0034 Principal Paid on Financing Agreements					
0035 Interest Paid on Financing Agreements - 5100-830					
0036 (Inc) Dec in Contributed Capital					
Net Cash Prov By (Used for) Capital and Related Financing Activities	(\$32,821)			(\$32,821)	
Cash Flows From Investing Activities					
0041 Earnings on Investments - 6500	5,980			5,980	
0042 Purchase of Inv Securities / Deposits to Inv Pools					
0043 Receipts From Investment Pool Withdrawals					
0044 Proceeds from Sale and Maturity of Inv Securities					

LEA : 123465303 Methacton SD

Printed 10/24/2019 11:17:21 AM

0045 Loans Received (Paid)

Net Cash Prov By (Used for) Investing Activities	\$5,980	\$5,980
--	---------	---------

LEA : 123465303 Methacton SD

Printed 10/24/2019 11:17:21 AM

	<u>Food Service</u> <u>(51)</u>	<u>Child Care Operations</u> <u>(52)</u>	<u>Other Enterprise</u> <u>(58)</u>	<u>TOTAL</u>	<u>Internal Service</u> <u>(60)</u>
Net Increase (Decrease) in Cash Flows	160,761			160,761	
0004 Cash and Cash Equivalents Beginning of Year	190,374			190,374	
Cash and Cash Equivalents at Year End	\$351,135			\$351,135	
<hr/>					
Reconciliation of Operating Income (Loss) To Net Cash Provided by (Used For) Operating Activities					
0005 Operating Income (Loss) per REP	(394,203)			(394,203)	
Adjustments					
0051 Depreciation and Net Amortization	9,784			9,784	
0052 Provision for Uncollectible Accounts					
0053 Other Adjustments					
Effect of Changes in Assets, Liabilities, Deferred Outflows and Deferred Inflows					
0054 (Inc) Dec In Accounts Receivable (0120-0150)	656			656	
0055 Advances to Other Funds (0160)					
0056 (Inc) Dec in Inventories (0170)	2,774			2,774	
0057 (Inc) Dec in Prepaid Expenses (0180)					
0058 (Inc) Dec in Other Current or Noncurrent Assets	(7,155)			(7,155)	
0064 Deferred Outflows (0910)					
0059 Inc (Dec) in Accounts Payable (0400-0450)	18,668			18,668	
0060 Inc (Dec) in Accrued Salaries/Benefits (0461)					
0065 Inc (Dec) in Net Pension Liabilities (0570)					
0066 Inc (Dec) in Other Postemp Benefit Oblig (0560)					
0061 Inc (Dec) in Payroll Deductions/Withholding (0462)					
0062 Inc (Dec) in Unearned Revenue (0480)	(1,565)			(1,565)	
0063 Inc (Dec) in Other Current or Noncurrent Liabilities	8,517			8,517	
0067 Deferred Inflows (0950)					
Total Adjustments	\$31,679			\$31,679	
Cash Provided By (Used for) Total	(\$362,524)			(\$362,524)	

COMBINED STATEMENT OF CASH FLOWS
SCHEDULE OF NONCASH INVESTING, CAPITAL, AND FINANCING ACTIVITIES

Explanation of Transaction and Balance Sheet Effect	Amount
Donated Commodities Received	76,573
Donated Commodities Used	78,138
Total	\$154,711

LEA : 123465303 Methacton SD

Printed 10/24/2019 11:17:23 AM

Amounts Expressed in Whole Dollars	<u>Private Purpose Trust</u> <u>(71)</u>	<u>Investment Trust</u> <u>(72)</u>	<u>Pension Trust</u> <u>(73)</u>	<u>Activity</u> <u>(81)</u>
Assets And Deferred Outflows Of Resources				
Assets				
0100 Cash and Cash Equivalents	95,795			359,117
0110 Investments				
0130 Due From Other Funds				
0147 Due from Component Unit				
0150 Other Receivables				4,748
0170 Inventories				
0180 Prepaid Expenses (Expenditures)				
0190 Other Current Assets				
0220 Buildings and Building Improvements (Net)				
0230 Machinery, Equipment and Furniture (Net)				
Total Assets	\$95,795			\$363,865
0910 Deferred Outflows of Resources				
Total Assets And Deferred Outflows Of Resources	\$95,795			\$363,865

LEA : 123465303 Methacton SD

Printed 10/24/2019 11:17:23 AM

Amounts Expressed in Whole Dollars

	<u>Other Agency</u> <u>(89)</u>	<u>Discrete Component Units</u> <u>(98)</u>	<u>Discrete Component Units</u> <u>(99)</u>	<u>Total Fiduciary Funds</u>
Assets And Deferred Outflows Of Resources				
Assets				
0100 Cash and Cash Equivalents				454,912
0110 Investments				
0130 Due From Other Funds				
0147 Due from Component Unit				
0150 Other Receivables				4,748
0170 Inventories				
0180 Prepaid Expenses (Expenditures)				
0190 Other Current Assets				
0220 Buildings and Building Improvements (Net)				
0230 Machinery, Equipment and Furniture (Net)				
Total Assets				\$459,660
0910 Deferred Outflows of Resources				
Total Assets And Deferred Outflows Of Resources				\$459,660

LEA : 123465303 Methacton SD

Printed 10/24/2019 11:17:23 AM

Amounts Expressed in Whole Dollars	<u>Private Purpose Trust</u> <u>(71)</u>	<u>Investment Trust</u> <u>(72)</u>	<u>Pension Trust</u> <u>(73)</u>	<u>Activity</u> <u>(81)</u>
Liabilities, Deferred Inflows Of Resources And Net Position				
Liabilities				
0400 Due to Other Funds				
0411 Due to Other Governments				86
0412 Due to Primary Government				
0413 Due to Component Unit				
0420 Accounts Payable				24,824
0430 Contracts Payable				
0450 Short-Term Payables				
0461 Accrued Salaries and Benefits				
0462 Payroll Deductions and Withholding				
0480 Unearned Revenues				
0490 Other Current Liabilities				338,955
Total Liabilities				\$363,865
0950 Deferred Inflows of Resources				
Net Position				
0791 Net Investment in Capital Assets				
0009 Restricted Net Position (0792 – 0798)	95,795			
0799 Unrestricted Net Position				
Total Net Position	\$95,795			
Total Liabilities, Deferred Inflows Of Resources And Net Position	\$95,795			\$363,865

LEA : 123465303 Methacton SD

Printed 10/24/2019 11:17:23 AM

Amounts Expressed in Whole Dollars

<u>Other Agency</u>	<u>Discrete Component Units</u>	<u>Discrete Component Units</u>	<u>Total Fiduciary Funds</u>
(89)	(98)	(99)	

Liabilities, Deferred Inflows Of Resources And Net Position

Liabilities

0400	Due to Other Funds			
0411	Due to Other Governments			86
0412	Due to Primary Government			
0413	Due to Component Unit			
0420	Accounts Payable			24,824
0430	Contracts Payable			
0450	Short-Term Payables			
0461	Accrued Salaries and Benefits			
0462	Payroll Deductions and Withholding			
0480	Unearned Revenues			
0490	Other Current Liabilities			338,955
Total Liabilities				\$363,865

0950 Deferred Inflows of Resources

Net Position

0791	Net Investment in Capital Assets			
0009	Restricted Net Position (0792 – 0798)			95,795
0799	Unrestricted Net Position			
Total Net Position				\$95,795
Total Liabilities, Deferred Inflows Of Resources And Net Position				\$459,660

LEA : 123465303 Methacton SD

Printed 10/24/2019 11:17:25 AM

Amounts Expressed in Whole Dollars	<u>Private Purpose Trust</u> <u>(71)</u>	<u>Investment Trust</u> <u>(72)</u>	<u>Pension Trust</u> <u>(73)</u>	<u>Discrete Component</u> <u>Units</u> <u>(98)</u>	<u>Discrete Component</u> <u>Units</u> <u>(99)</u>	<u>Total Fiduciary</u> <u>Funds</u>
Additions						
0091 Gifts and Contributions	5,410					5,410
0092 Other Additions	1,128					1,128
Deductions						
0093 Scholarships Awarded	7,600					7,600
0094 Other Deductions						
Change In Net Position	(\$1,062)					(\$1,062)
0006 Net Position – Beginning of Fiscal Year	96,857					96,857
0007 Net Position Held in Trust for Pension Benefits						
Net Position - End of Fiscal Year	\$95,795					\$95,795

LEA : 123465303 Methacton SD

General Fund (10)

Printed 10/24/2019 11:17:27 AM

Page - 1 of 3

	Revenue Reported In Current Year	Current Year Tax Accrual	Prior Year Tax Accrual	Taxes Collected In Current Year
Revenue from Local Sources				
6111 Current Real Estate Taxes	72,753,185.84			72,753,185.84
6112 Interim Real Estate Taxes	370,318.37	36,287.45	3,387.11	337,418.03
6113 Public Utility Realty Taxes	81,080.98			81,080.98
6114 Payments in Lieu of Current Taxes - State / Local	59,577.70			59,577.70
6120 Current Per Capita Taxes, Section 679	110,841.19	47,843.30	43,603.31	106,601.20
6141 Current Act 511 Per Capita Taxes	110,841.18	47,843.30	43,603.30	106,601.18
6142 Current Act 511 Occupation Taxes - Flat Rate	106,710.28	2,894.96	3,626.39	107,441.71
6151 Current Act 511 Earned Income Taxes	7,191,392.25	142,154.51	185,805.62	7,235,043.36
6153 Current Act 511 Real Estate Transfer Taxes	1,341,094.94	237,767.49	220,573.17	1,323,900.62
6154 Current Act 511 Amusement Taxes	25,966.36		13,196.79	39,163.15
6411 Delinquent Real Estate Taxes	1,117,508.92	80,486.90	122,183.93	1,159,205.95
6420 Delinquent Per Capita Taxes, Section 679	30,160.77	4,199.46	3,002.12	28,963.43
6440 Delinquent Local Enabling Taxes - Flat Rate Assessments	21,099.21	4,199.48	3,002.11	19,901.84
6500 Earnings on Investments	857,317.35			
6700 Revenues from LEA Activities	212,072.75			
6831 Federal Revenue Received from Other Pennsylvania Public LEAs	12,319.13			
6832 Federal IDEA Revenue Received as Pass Through	886,440.33			
6910 Rentals	115,695.99			
6920 Contributions and Donations from Private Sources	31,245.00			
6942 Summer School Tuition	42,361.07			
6943 Adult Education Tuition	190,943.99			
6944 Receipts from Other LEAs in Pennsylvania - Education	293,169.00			
6961 Transportation Services Provided Other Pennsylvania LEAs	14,717.50			
6991 Refunds of a Prior Year Expenditure	93,791.59			
6992 Energy Efficiency Revenues and Incentives	49,798.01			
6999 Other Revenues Not Specified Above	16,008.49			
TOTAL Revenue from Local Sources	\$86,135,658.19	\$603,676.85	\$641,983.85	\$83,358,084.99

	Revenue Reported In Current Year			
<u>Revenue from State Sources</u>				
7110 Basic Education Funding	6,835,101.53			
7160 Tuition for Orphans Subsidy	45,097.19			
7271 Special Education funds for School-Aged Pupils	2,609,065.61			
7299 Program Revenues Not Listed Previously in the 7200 Series	1,749.62			
7311 Pupil Transportation Subsidy	2,025,446.91			
7312 Nonpublic and Charter School Pupil Transportation Subsidy	270,270.00			
7320 Rental and Sinking Fund Payments / Building Reimbursement Subsidy	471,751.56			
7330 Health Services (Medical, Dental, Nurse, Act 25)	88,360.76			
7340 State Property Tax Reduction Allocation	2,063,531.50			
7361 School Safety and Security Grants	25,000.00			
7505 Ready to Learn Block Grant	252,829.00			
7810 State Share of Social Security and Medicare Taxes	1,545,415.55			
7820 State Share of Retirement Contributions	7,028,511.65			
TOTAL Revenue from State Sources	\$23,262,130.88			

	Revenue Reported In Current Year			
<u>Revenue from Federal Sources</u>				
8514 NCLB, Title I - Improving the Academic Achievement of the Disadvantaged	292,915.85			
8515 NCLB, Title II - Preparing, Training and Recruiting High Quality Teachers and Principals	95,416.00			
8517 NCLB, Title IV - 21St Century Schools	23,588.00			
8810 School-Based Access Medicaid Reimbursement Program (SBAP) Reimbursements (Access)	240,000.00			
8820 Medical Assistance Reimbursement for Administrative Claiming (Quarterly) Program	21,697.99			
TOTAL Revenue from Federal Sources	\$673,617.84			
TOTAL FROM ALL SOURCES	\$110,071,406.91	\$603,676.85	\$641,983.85	\$83,358,084.99

Revenue from Local Sources	86,135,658.19
Revenue from State Sources	23,262,130.88
Revenue from Federal Sources	673,617.84
Other Financing Sources	
TOTAL FROM ALL SOURCES	\$110,071,406.91

LEA : 123465303 Methacton SD

Printed 10/24/2019 11:17:33 AM

General Fund (10)

1000 Instruction	Total
100 <u>Personnel Services – Salaries</u>	
100 Personnel Services – Salaries	30,696,142.33
Total Personnel Services – Salaries	\$30,696,142.33
200 <u>Personnel Services – Employee Benefits</u>	
210 Group Insurance – Contracted Provider	43,342.58
220 Social Security Contributions	2,216,081.15
230 PSERS Retirement Contributions	10,227,331.33
250 Unemployment Compensation	85.24
260 Workers' Compensation	126,050.88
270 Group Insurance – Self-Insurance	6,703,270.91
291 Other Retirement Plans	385,000.00
Total Personnel Services – Employee Benefits	\$19,701,162.09
300 <u>Purchased Professional and Technical Services</u>	
322 Professional Educational Services – Ius	1,416,327.63
323 Professional Educational Services – Other Educational Agencies	97.95
329 Professional Educational Services – Other	2,393,735.25
330 Other Professional Services	1,783,455.34
340 Technical Services	18,744.94
Total Purchased Professional and Technical Services	\$5,612,361.11
400 <u>Purchased Property Services</u>	
430 Repairs and Maintenance Services	27,815.85
440 Rentals	787,210.16
Total Purchased Property Services	\$815,026.01
500 <u>Other Purchased Services</u>	
510 Student Transportation Services	166.80
530 Communications	1,600.00
550 Printing and Binding	13,586.64
561 Tuition To Other School Districts Within the State	220,986.69
562 Tuition To Pennsylvania Charter Schools	1,273,686.32
564 Tuition To Career and Technology Centers	1,304,698.67
567 Tuition To Approved Private Schools (APS) and PA Chartered Schools for the Deaf and Blind	471,358.31
568 Tuition To Private Residential Rehabilitative Institutions (PRRI) [In-State] and Detention Centers	467,045.91
569 Tuition – Other	126,509.76
580 Travel	3,676.65
Total Other Purchased Services	\$3,883,315.75
600 <u>Supplies</u>	
610 General Supplies	439,257.17
620 Energy	1,173.48
630 Food	1,716.30
640 Books and Periodicals	314,056.63
650 Supplies & Fees – Technology Related	297,954.74
Total Supplies	\$1,054,158.32

LEA : 123465303 Methacton SD

Printed 10/24/2019 11:17:33 AM

General Fund (10)		
1000 Instruction		<u>Total</u>
700 <u>Property</u>		
752 Capital Equipment – Original and Additional	101,170.97	
762 Capitalized Equipment - Replacement	229.99	
Total Property	\$101,400.96	
800 <u>Other Objects</u>		
810 Dues and Fees	3,195.80	
820 Claims and Judgments Against the LEA	438,658.10	
Total Other Objects	\$441,853.90	
Total 1000 Instruction	\$62,305,420.47	

LEA : 123465303 Methacton SD

Printed 10/24/2019 11:17:33 AM

General Fund (10)

1100 Regular Programs – Elementary / Secondary

	Elementary	Secondary	Federal	Total
100 Personnel Services – Salaries				
100 Personnel Services – Salaries	12,165,848.94	10,702,999.02	209,077.98	23,077,925.94
Total Personnel Services – Salaries	\$12,165,848.94	\$10,702,999.02	\$209,077.98	\$23,077,925.94
200 Personnel Services – Employee Benefits				
210 Group Insurance – Contracted Provider	15,827.92	14,748.70	75.13	30,651.75
220 Social Security Contributions	876,332.77	776,667.73	15,404.93	1,668,405.43
230 PSERS Retirement Contributions	4,089,205.84	3,553,685.07	68,755.43	7,711,646.34
250 Unemployment Compensation	43.47	41.77		85.24
260 Workers' Compensation	48,509.96	46,607.61		95,117.57
270 Group Insurance – Self-Insurance	2,563,600.70	1,962,908.96	45,746.74	4,572,256.40
291 Other Retirement Plans	196,350.00	188,650.00		385,000.00
Total Personnel Services – Employee Benefits	\$7,789,870.66	\$6,543,309.84	\$129,982.23	\$14,463,162.73
300 Purchased Professional and Technical Services				
322 Professional Educational Services – Ius	151,852.07	218,276.40		370,128.47
323 Professional Educational Services – Other Educational Agencies		97.95		97.95
329 Professional Educational Services – Other	1,065,798.38	647,858.55	1,246.42	1,714,903.35
330 Other Professional Services	1,345.00	49.95		1,394.95
Total Purchased Professional and Technical Services	\$1,218,995.45	\$866,282.85	\$1,246.42	\$2,086,524.72
400 Purchased Property Services				
430 Repairs and Maintenance Services	8,590.94	18,718.13		27,309.07
440 Rentals	784,451.00			784,451.00
Total Purchased Property Services	\$793,041.94	\$18,718.13		\$811,760.07
500 Other Purchased Services				
510 Student Transportation Services		166.80		166.80
550 Printing and Binding	3,224.00			3,224.00
562 Tuition To Pennsylvania Charter Schools	443,197.37	425,817.09		869,014.46
568 Tuition To Private Residential Rehabilitative Institutions (PRRI) [In-State] and Detention Centers		35,754.19		35,754.19
580 Travel	232.13	2,887.47		3,119.60
Total Other Purchased Services	\$446,653.50	\$464,625.55		\$911,279.05
600 Supplies				
610 General Supplies	208,804.83	184,001.35		392,806.18
630 Food	1,425.84			1,425.84
640 Books and Periodicals	169,916.44	133,075.04	490.90	303,482.38
650 Supplies & Fees – Technology Related	163,634.36	125,841.93		289,476.29
Total Supplies	\$543,781.47	\$442,918.32	\$490.90	\$987,190.69
700 Property				
752 Capital Equipment – Original and Additional		21,013.00		21,013.00
762 Capitalized Equipment - Replacement		229.99		229.99
Total Property		\$21,242.99		\$21,242.99
800 Other Objects				
810 Dues and Fees		2,943.80	210.00	3,153.80

LEA : 123465303 Methacton SD

Printed 10/24/2019 11:17:33 AM

General Fund (10)

1100 Regular Programs – Elementary / Secondary

	<u>Elementary</u>	<u>Secondary</u>	<u>Federal</u>	<u>Total</u>
Total Other Objects		\$2,943.80	\$210.00	\$3,153.80
Total 1100 Regular Programs – Elementary / Secondary	\$22,958,191.96	\$19,063,040.50	\$341,007.53	\$42,362,239.99

LEA : 123465303 Methacton SD

Printed 10/24/2019 11:17:33 AM

General Fund (10)

1110 Regular Programs

	Elementary	Secondary	Federal	Total
100 <u>Personnel Services – Salaries</u>				
100 Personnel Services – Salaries	12,165,848.94	10,702,999.02	23,637.31	22,892,485.27
Total Personnel Services – Salaries	\$12,165,848.94	\$10,702,999.02	\$23,637.31	\$22,892,485.27
200 <u>Personnel Services – Employee Benefits</u>				
210 Group Insurance – Contracted Provider	15,827.92	14,748.70		30,576.62
220 Social Security Contributions	876,332.77	776,667.73	1,529.25	1,654,529.75
230 PSERS Retirement Contributions	4,089,205.84	3,553,685.07	7,901.90	7,650,792.81
250 Unemployment Compensation	43.47	41.77		85.24
260 Workers' Compensation	48,509.96	46,607.61		95,117.57
270 Group Insurance – Self-Insurance	2,563,600.70	1,962,908.96	21,953.28	4,548,462.94
291 Other Retirement Plans	196,350.00	188,650.00		385,000.00
Total Personnel Services – Employee Benefits	\$7,789,870.66	\$6,543,309.84	\$31,384.43	\$14,364,564.93
300 <u>Purchased Professional and Technical Services</u>				
322 Professional Educational Services – Ius	151,852.07	218,276.40		370,128.47
323 Professional Educational Services – Other Educational Agencies		97.95		97.95
329 Professional Educational Services – Other	1,065,798.38	647,858.55		1,713,656.93
330 Other Professional Services	1,345.00	49.95		1,394.95
Total Purchased Professional and Technical Services	\$1,218,995.45	\$866,282.85		\$2,085,278.30
400 <u>Purchased Property Services</u>				
430 Repairs and Maintenance Services	8,590.94	18,718.13		27,309.07
440 Rentals	784,451.00			784,451.00
Total Purchased Property Services	\$793,041.94	\$18,718.13		\$811,760.07
500 <u>Other Purchased Services</u>				
510 Student Transportation Services		166.80		166.80
550 Printing and Binding	3,224.00			3,224.00
562 Tuition To Pennsylvania Charter Schools	443,197.37	425,817.09		869,014.46
568 Tuition To Private Residential Rehabilitative Institutions (PRRI) [In-State] and Detention Centers		35,754.19		35,754.19
580 Travel	232.13	2,887.47		3,119.60
Total Other Purchased Services	\$446,653.50	\$464,625.55		\$911,279.05
600 <u>Supplies</u>				
610 General Supplies	208,804.83	184,001.35		392,806.18
630 Food	1,425.84			1,425.84
640 Books and Periodicals	169,916.44	133,075.04		302,991.48
650 Supplies & Fees – Technology Related	163,634.36	125,841.93		289,476.29
Total Supplies	\$543,781.47	\$442,918.32		\$986,699.79
700 <u>Property</u>				
752 Capital Equipment – Original and Additional		21,013.00		21,013.00
762 Capitalized Equipment - Replacement		229.99		229.99
Total Property		\$21,242.99		\$21,242.99
800 <u>Other Objects</u>				
810 Dues and Fees		2,943.80		2,943.80

LEA : 123465303 Methacton SD

Printed 10/24/2019 11:17:33 AM

General Fund (10)

1110 Regular Programs

	<u>Elementary</u>	<u>Secondary</u>	<u>Federal</u>	<u>Total</u>
Total Other Objects		\$2,943.80		\$2,943.80
Total 1110 Regular Programs	\$22,958,191.96	\$19,063,040.50	\$55,021.74	\$42,076,254.20

LEA : 123465303 Methacton SD

Printed 10/24/2019 11:17:33 AM

General Fund (10)				
1190 Federally-Funded Regular Programs	<u>Elementary</u>	<u>Secondary</u>	<u>Federal</u>	<u>Total</u>
100 <u>Personnel Services – Salaries</u>				
100 Personnel Services – Salaries			185,440.67	185,440.67
Total Personnel Services – Salaries			\$185,440.67	\$185,440.67
200 <u>Personnel Services – Employee Benefits</u>				
210 Group Insurance – Contracted Provider			75.13	75.13
220 Social Security Contributions			13,875.68	13,875.68
230 PSERS Retirement Contributions			60,853.53	60,853.53
270 Group Insurance – Self-Insurance			23,793.46	23,793.46
Total Personnel Services – Employee Benefits			\$98,597.80	\$98,597.80
300 <u>Purchased Professional and Technical Services</u>				
329 Professional Educational Services – Other			1,246.42	1,246.42
Total Purchased Professional and Technical Services			\$1,246.42	\$1,246.42
600 <u>Supplies</u>				
640 Books and Periodicals			490.90	490.90
Total Supplies			\$490.90	\$490.90
800 <u>Other Objects</u>				
810 Dues and Fees			210.00	210.00
Total Other Objects			\$210.00	\$210.00
Total 1190 Federally-Funded Regular Programs			\$285,985.79	\$285,985.79

LEA : 123465303 Methacton SD

Printed 10/24/2019 11:17:33 AM

General Fund (10)

1200 Special Programs – Elementary / Secondary	Elementary	Secondary	Federal	Total
100 Personnel Services – Salaries				
100 Personnel Services – Salaries	3,312,638.85	2,526,267.15	886,440.33	6,725,346.33
Total Personnel Services – Salaries	\$3,312,638.85	\$2,526,267.15	\$886,440.33	\$6,725,346.33
200 Personnel Services – Employee Benefits				
210 Group Insurance – Contracted Provider	6,369.89	5,216.92		11,586.81
220 Social Security Contributions	268,771.45	214,391.08		483,162.53
230 PSERS Retirement Contributions	1,241,165.87	985,099.03		2,226,264.90
260 Workers' Compensation	14,217.05	13,659.52		27,876.57
270 Group Insurance – Self-Insurance	1,147,808.13	850,491.22		1,998,299.35
Total Personnel Services – Employee Benefits	\$2,678,332.39	\$2,068,857.77		\$4,747,190.16
300 Purchased Professional and Technical Services				
322 Professional Educational Services – lus	201,402.36	823,656.80		1,025,059.16
329 Professional Educational Services – Other	142,597.11	536,234.79		678,831.90
330 Other Professional Services	1,008,896.59	647,864.85	9,106.72	1,665,868.16
340 Technical Services	9,559.92	9,185.02		18,744.94
Total Purchased Professional and Technical Services	\$1,362,455.98	\$2,016,941.46	\$9,106.72	\$3,388,504.16
400 Purchased Property Services				
430 Repairs and Maintenance Services	110.98			110.98
Total Purchased Property Services	\$110.98			\$110.98
500 Other Purchased Services				
561 Tuition To Other School Districts Within the State		47,165.92		47,165.92
562 Tuition To Pennsylvania Charter Schools	206,382.65	198,289.21		404,671.86
567 Tuition To Approved Private Schools (APS) and PA Chartered Schools for the Deaf and Blind	158,894.70	312,463.61		471,358.31
568 Tuition To Private Residential Rehabilitative Institutions (PRRI) [In-State] and Detention Centers		426,617.72		426,617.72
569 Tuition – Other		126,509.76		126,509.76
580 Travel	225.39	331.66		557.05
Total Other Purchased Services	\$365,502.74	\$1,111,377.88		\$1,476,880.62
600 Supplies				
610 General Supplies	20,874.26	9,707.89		30,582.15
630 Food	290.46			290.46
640 Books and Periodicals	4,790.83	5,622.33		10,413.16
650 Supplies & Fees – Technology Related	144.46	4,406.99	3,927.00	8,478.45
Total Supplies	\$26,100.01	\$19,737.21	\$3,927.00	\$49,764.22
800 Other Objects				
820 Claims and Judgments Against the LEA	108,542.00	330,116.10		438,658.10
Total Other Objects	\$108,542.00	\$330,116.10		\$438,658.10
Total 1200 Special Programs – Elementary / Secondary	\$7,853,682.95	\$8,073,297.57	\$899,474.05	\$16,826,454.57

LEA : 123465303 Methacton SD

Printed 10/24/2019 11:17:33 AM

General Fund (10)				
1210 Life Skills Support	<u>Elementary</u>	<u>Secondary</u>	<u>Federal</u>	<u>Total</u>
100 <u>Personnel Services – Salaries</u>				
100 Personnel Services – Salaries	693.76	252,424.14	28,100.90	281,218.80
Total Personnel Services – Salaries	\$693.76	\$252,424.14	\$28,100.90	\$281,218.80
200 <u>Personnel Services – Employee Benefits</u>				
210 Group Insurance – Contracted Provider	63.15	317.74		380.89
220 Social Security Contributions	2,014.39	17,858.09		19,872.48
230 PSERS Retirement Contributions	9,445.32	84,164.65		93,609.97
270 Group Insurance – Self-Insurance	20,464.75	90,703.38		111,168.13
Total Personnel Services – Employee Benefits	\$31,987.61	\$193,043.86		\$225,031.47
300 <u>Purchased Professional and Technical Services</u>				
322 Professional Educational Services – Ius		222,802.90		222,802.90
329 Professional Educational Services – Other		96,907.20		96,907.20
Total Purchased Professional and Technical Services		\$319,710.10		\$319,710.10
500 <u>Other Purchased Services</u>				
567 Tuition To Approved Private Schools (APS) and PA Chartered Schools for the Deaf and Blind	8,517.74	8,183.72		16,701.46
Total Other Purchased Services	\$8,517.74	\$8,183.72		\$16,701.46
600 <u>Supplies</u>				
610 General Supplies		225.99		225.99
650 Supplies & Fees – Technology Related		2,827.54		2,827.54
Total Supplies		\$3,053.53		\$3,053.53
Total 1210 Life Skills Support	\$41,199.11	\$776,415.35	\$28,100.90	\$845,715.36

LEA : 123465303 Methacton SD

Printed 10/24/2019 11:17:33 AM

General Fund (10)

1220 Sensory Support

	Elementary	Secondary	Federal	Total
100 Personnel Services – Salaries				
100 Personnel Services – Salaries	310,530.69	150,850.10		461,380.79
Total Personnel Services – Salaries	\$310,530.69	\$150,850.10		\$461,380.79
200 Personnel Services – Employee Benefits				
210 Group Insurance – Contracted Provider	225.41	103.20		328.61
220 Social Security Contributions	23,028.96	11,130.18		34,159.14
230 PSERS Retirement Contributions	103,656.60	50,429.22		154,085.82
270 Group Insurance – Self-Insurance	50,551.60	26,049.36		76,600.96
Total Personnel Services – Employee Benefits	\$177,462.57	\$87,711.96		\$265,174.53
300 Purchased Professional and Technical Services				
322 Professional Educational Services – Ius	62,817.85	148,706.77		211,524.62
329 Professional Educational Services – Other	4,420.00	10,061.20		14,481.20
330 Other Professional Services	57,832.14	15,370.91		73,203.05
Total Purchased Professional and Technical Services	\$125,069.99	\$174,138.88		\$299,208.87
500 Other Purchased Services				
568 Tuition To Private Residential Rehabilitative Institutions (PRRI) [In-State] and Detention Centers		34,478.08		34,478.08
Total Other Purchased Services		\$34,478.08		\$34,478.08
600 Supplies				
610 General Supplies	3,666.46			3,666.46
650 Supplies & Fees – Technology Related		475.00		475.00
Total Supplies	\$3,666.46	\$475.00		\$4,141.46
Total 1220 Sensory Support	\$616,729.71	\$447,654.02		\$1,064,383.73

LEA : 123465303 Methacton SD

Printed 10/24/2019 11:17:33 AM

General Fund (10)

1230 Emotional Support	Elementary	Secondary	Federal	Total
100 Personnel Services – Salaries				
100 Personnel Services – Salaries	730,686.57	601,895.79	255,068.00	1,587,650.36
Total Personnel Services – Salaries	\$730,686.57	\$601,895.79	\$255,068.00	\$1,587,650.36
200 Personnel Services – Employee Benefits				
210 Group Insurance – Contracted Provider	1,000.21	600.00		1,600.21
220 Social Security Contributions	65,348.58	49,138.64		114,487.22
230 PSERS Retirement Contributions	302,092.51	226,667.02		528,759.53
270 Group Insurance – Self-Insurance	267,947.05	205,723.68		473,670.73
Total Personnel Services – Employee Benefits	\$636,388.35	\$482,129.34		\$1,118,517.69
300 Purchased Professional and Technical Services				
322 Professional Educational Services – Ius	2,153.84	201,870.56		204,024.40
329 Professional Educational Services – Other	12,528.20	158,457.00		170,985.20
330 Other Professional Services	904,254.90	456,894.52		1,361,149.42
Total Purchased Professional and Technical Services	\$918,936.94	\$817,222.08		\$1,736,159.02
400 Purchased Property Services				
430 Repairs and Maintenance Services	110.98			110.98
Total Purchased Property Services	\$110.98			\$110.98
500 Other Purchased Services				
561 Tuition To Other School Districts Within the State		47,165.92		47,165.92
567 Tuition To Approved Private Schools (APS) and PA Chartered Schools for the Deaf and Blind		132,649.96		132,649.96
568 Tuition To Private Residential Rehabilitative Institutions (PRRI) [In-State] and Detention Centers		377,523.24		377,523.24
569 Tuition – Other		126,509.76		126,509.76
580 Travel	56.41	331.66		388.07
Total Other Purchased Services	\$56.41	\$684,180.54		\$684,236.95
600 Supplies				
610 General Supplies	2,883.17	3,112.08		5,995.25
640 Books and Periodicals	1,363.16	1,027.89		2,391.05
650 Supplies & Fees – Technology Related	144.46	89.95		234.41
Total Supplies	\$4,390.79	\$4,229.92		\$8,620.71
800 Other Objects				
820 Claims and Judgments Against the LEA	8,175.00	181,802.50		189,977.50
Total Other Objects	\$8,175.00	\$181,802.50		\$189,977.50
Total 1230 Emotional Support	\$2,298,745.04	\$2,771,460.17	\$255,068.00	\$5,325,273.21

LEA : 123465303 Methacton SD

Printed 10/24/2019 11:17:33 AM

General Fund (10)

1240 Academic Support

	Elementary	Secondary	Federal	Total
100 <u>Personnel Services – Salaries</u>				
100 Personnel Services – Salaries	1,756,665.12	1,091,317.33	475,935.43	3,323,917.88
Total Personnel Services – Salaries	\$1,756,665.12	\$1,091,317.33	\$475,935.43	\$3,323,917.88
200 <u>Personnel Services – Employee Benefits</u>				
210 Group Insurance – Contracted Provider	4,420.31	3,593.48		8,013.79
220 Social Security Contributions	141,750.19	96,554.68		238,304.87
230 PSERS Retirement Contributions	658,322.81	439,965.33		1,098,288.14
260 Workers' Compensation	14,217.05	13,659.52		27,876.57
270 Group Insurance – Self-Insurance	602,211.75	327,466.89		929,678.64
Total Personnel Services – Employee Benefits	\$1,420,922.11	\$881,239.90		\$2,302,162.01
300 <u>Purchased Professional and Technical Services</u>				
322 Professional Educational Services – lus	3,021.30	250,276.57		253,297.87
329 Professional Educational Services – Other	105,369.45	258,694.41		364,063.86
330 Other Professional Services	46,809.55	175,599.42		222,408.97
Total Purchased Professional and Technical Services	\$155,200.30	\$684,570.40		\$839,770.70
500 <u>Other Purchased Services</u>				
562 Tuition To Pennsylvania Charter Schools	206,382.65	198,289.21		404,671.86
568 Tuition To Private Residential Rehabilitative Institutions (PRRI) [In-State] and Detention Centers		14,616.40		14,616.40
580 Travel	168.98			168.98
Total Other Purchased Services	\$206,551.63	\$212,905.61		\$419,457.24
600 <u>Supplies</u>				
610 General Supplies	14,300.64	6,398.30		20,698.94
630 Food	290.46			290.46
640 Books and Periodicals	3,427.67	4,594.44		8,022.11
650 Supplies & Fees – Technology Related		1,014.50		1,014.50
Total Supplies	\$18,018.77	\$12,007.24		\$30,026.01
800 <u>Other Objects</u>				
820 Claims and Judgments Against the LEA	100,367.00	22,753.20		123,120.20
Total Other Objects	\$100,367.00	\$22,753.20		\$123,120.20
Total 1240 Academic Support	\$3,657,724.93	\$2,904,793.68	\$475,935.43	\$7,038,454.04

LEA : 123465303 Methacton SD

Printed 10/24/2019 11:17:33 AM

General Fund (10)

1241 Learning Support – Public	Elementary	Secondary	Federal	Total
100 <u>Personnel Services – Salaries</u>				
100 Personnel Services – Salaries	1,375,568.60	719,870.03	475,935.43	2,571,374.06
Total Personnel Services – Salaries	\$1,375,568.60	\$719,870.03	\$475,935.43	\$2,571,374.06
200 <u>Personnel Services – Employee Benefits</u>				
210 Group Insurance – Contracted Provider	4,225.49	3,419.54		7,645.03
220 Social Security Contributions	114,763.31	69,256.53		184,019.84
230 PSERS Retirement Contributions	533,335.74	318,859.22		852,194.96
260 Workers' Compensation	14,217.05	13,659.52		27,876.57
270 Group Insurance – Self-Insurance	537,331.45	282,112.39		819,443.84
Total Personnel Services – Employee Benefits	\$1,203,873.04	\$687,307.20		\$1,891,180.24
300 <u>Purchased Professional and Technical Services</u>				
322 Professional Educational Services – lus	3,021.30	250,276.57		253,297.87
329 Professional Educational Services – Other	105,369.45	258,694.41		364,063.86
330 Other Professional Services	46,809.55	175,599.42		222,408.97
Total Purchased Professional and Technical Services	\$155,200.30	\$684,570.40		\$839,770.70
500 <u>Other Purchased Services</u>				
562 Tuition To Pennsylvania Charter Schools	206,382.65	198,289.21		404,671.86
568 Tuition To Private Residential Rehabilitative Institutions (PRRI) [In-State] and Detention Centers		14,616.40		14,616.40
580 Travel	168.98			168.98
Total Other Purchased Services	\$206,551.63	\$212,905.61		\$419,457.24
600 <u>Supplies</u>				
610 General Supplies	7,955.17	2,518.11		10,473.28
630 Food	290.46			290.46
640 Books and Periodicals	3,427.67	4,410.67		7,838.34
650 Supplies & Fees – Technology Related		1,014.50		1,014.50
Total Supplies	\$11,673.30	\$7,943.28		\$19,616.58
800 <u>Other Objects</u>				
820 Claims and Judgments Against the LEA	100,367.00	22,753.20		123,120.20
Total Other Objects	\$100,367.00	\$22,753.20		\$123,120.20
Total 1241 Learning Support – Public	\$3,053,233.87	\$2,335,349.72	\$475,935.43	\$5,864,519.02

LEA : 123465303 Methacton SD

Printed 10/24/2019 11:17:33 AM

General Fund (10)				
1243 Gifted Support	<u>Elementary</u>	<u>Secondary</u>	<u>Federal</u>	<u>Total</u>
100 <u>Personnel Services – Salaries</u>				
100 Personnel Services – Salaries	381,096.52	371,447.30		752,543.82
Total Personnel Services – Salaries	\$381,096.52	\$371,447.30		\$752,543.82
200 <u>Personnel Services – Employee Benefits</u>				
210 Group Insurance – Contracted Provider	194.82	173.94		368.76
220 Social Security Contributions	26,986.88	27,298.15		54,285.03
230 PSERS Retirement Contributions	124,987.07	121,106.11		246,093.18
270 Group Insurance – Self-Insurance	64,880.30	45,354.50		110,234.80
Total Personnel Services – Employee Benefits	\$217,049.07	\$193,932.70		\$410,981.77
600 <u>Supplies</u>				
610 General Supplies	6,345.47	3,880.19		10,225.66
640 Books and Periodicals		183.77		183.77
Total Supplies	\$6,345.47	\$4,063.96		\$10,409.43
Total 1243 Gifted Support	\$604,491.06	\$569,443.96		\$1,173,935.02

LEA : 123465303 Methacton SD

Printed 10/24/2019 11:17:33 AM

General Fund (10)

1260 Physical Support

	<u>Elementary</u>	<u>Secondary</u>	<u>Federal</u>	<u>Total</u>
300 <u>Purchased Professional and Technical Services</u>				
330 Other Professional Services			9,106.72	9,106.72
Total Purchased Professional and Technical Services			\$9,106.72	\$9,106.72
Total 1260 Physical Support			\$9,106.72	\$9,106.72

LEA : 123465303 Methacton SD

Printed 10/24/2019 11:17:33 AM

General Fund (10)				
1270 Multi-Handicapped Support	<u>Elementary</u>	<u>Secondary</u>	<u>Federal</u>	<u>Total</u>
300 <u>Purchased Professional and Technical Services</u>				
322 Professional Educational Services – Ius	103,321.37			103,321.37
329 Professional Educational Services – Other	7,670.00			7,670.00
Total Purchased Professional and Technical Services	\$110,991.37			\$110,991.37
500 <u>Other Purchased Services</u>				
567 Tuition To Approved Private Schools (APS) and PA Chartered Schools for the Deaf and Blind	2,336.00	5,500.00		7,836.00
Total Other Purchased Services	\$2,336.00	\$5,500.00		\$7,836.00
600 <u>Supplies</u>				
610 General Supplies	23.99	(28.48)		(4.49)
Total Supplies	\$23.99	(\$28.48)		(\$4.49)
800 <u>Other Objects</u>				
820 Claims and Judgments Against the LEA		125,560.40		125,560.40
Total Other Objects		\$125,560.40		\$125,560.40
Total 1270 Multi-Handicapped Support	\$113,351.36	\$131,031.92		\$244,383.28

LEA : 123465303 Methacton SD

Printed 10/24/2019 11:17:33 AM

General Fund (10)

1280 Early Intervention Support	<u>Elementary</u>	<u>Secondary</u>	<u>Federal</u>	<u>Total</u>
300 <u>Purchased Professional and Technical Services</u>				
322 Professional Educational Services – lus	30,088.00			30,088.00
Total Purchased Professional and Technical Services	\$30,088.00			\$30,088.00
600 <u>Supplies</u>				
650 Supplies & Fees – Technology Related			3,927.00	3,927.00
Total Supplies			\$3,927.00	\$3,927.00
Total 1280 Early Intervention Support	\$30,088.00		\$3,927.00	\$34,015.00

LEA : 123465303 Methacton SD

Printed 10/24/2019 11:17:33 AM

General Fund (10)				
1290 Special Programs - Other Support	<u>Elementary</u>	<u>Secondary</u>	<u>Federal</u>	<u>Total</u>
100 <u>Personnel Services – Salaries</u>				
100 Personnel Services – Salaries	514,062.71	429,779.79	127,336.00	1,071,178.50
Total Personnel Services – Salaries	\$514,062.71	\$429,779.79	\$127,336.00	\$1,071,178.50
200 <u>Personnel Services – Employee Benefits</u>				
210 Group Insurance – Contracted Provider	660.81	602.50		1,263.31
220 Social Security Contributions	36,629.33	39,709.49		76,338.82
230 PSERS Retirement Contributions	167,648.63	183,872.81		351,521.44
270 Group Insurance – Self-Insurance	206,632.98	200,547.91		407,180.89
Total Personnel Services – Employee Benefits	\$411,571.75	\$424,732.71		\$836,304.46
300 <u>Purchased Professional and Technical Services</u>				
329 Professional Educational Services – Other	12,609.46	12,114.98		24,724.44
340 Technical Services	9,559.92	9,185.02		18,744.94
Total Purchased Professional and Technical Services	\$22,169.38	\$21,300.00		\$43,469.38
500 <u>Other Purchased Services</u>				
567 Tuition To Approved Private Schools (APS) and PA Chartered Schools for the Deaf and Blind	148,040.96	166,129.93		314,170.89
Total Other Purchased Services	\$148,040.96	\$166,129.93		\$314,170.89
Total 1290 Special Programs - Other Support	\$1,095,844.80	\$1,041,942.43	\$127,336.00	\$2,265,123.23

LEA : 123465303 Methacton SD

Printed 10/24/2019 11:17:33 AM

General Fund (10)

1300 Vocational Education

	<u>Elementary</u>	<u>Secondary</u>	<u>Federal</u>	<u>Total</u>
100 <u>Personnel Services – Salaries</u>				
100 Personnel Services – Salaries		745,698.16		745,698.16
Total Personnel Services – Salaries		\$745,698.16		\$745,698.16
200 <u>Personnel Services – Employee Benefits</u>				
210 Group Insurance – Contracted Provider		942.21		942.21
220 Social Security Contributions		53,570.94		53,570.94
230 PSERS Retirement Contributions		242,974.93		242,974.93
260 Workers' Compensation		3,056.74		3,056.74
270 Group Insurance – Self-Insurance		110,307.44		110,307.44
Total Personnel Services – Employee Benefits		\$410,852.26		\$410,852.26
500 <u>Other Purchased Services</u>				
564 Tuition To Career and Technology Centers		1,304,698.67		1,304,698.67
Total Other Purchased Services		\$1,304,698.67		\$1,304,698.67
600 <u>Supplies</u>				
610 General Supplies		13,566.92		13,566.92
640 Books and Periodicals		161.09		161.09
Total Supplies		\$13,728.01		\$13,728.01
Total 1300 Vocational Education		\$2,474,977.10		\$2,474,977.10

LEA : 123465303 Methacton SD

Printed 10/24/2019 11:17:33 AM

General Fund (10)

1400 Other Instructional Programs – Elementary / Secondary	<u>Elementary</u>	<u>Secondary</u>	<u>Federal</u>	<u>Total</u>
100 <u>Personnel Services – Salaries</u>				
100 Personnel Services – Salaries		138,238.90		138,238.90
Total Personnel Services – Salaries		\$138,238.90		\$138,238.90
200 <u>Personnel Services – Employee Benefits</u>				
210 Group Insurance – Contracted Provider		161.81		161.81
220 Social Security Contributions		10,251.28		10,251.28
230 PSERS Retirement Contributions		45,834.90		45,834.90
270 Group Insurance – Self-Insurance		22,407.72		22,407.72
Total Personnel Services – Employee Benefits		\$78,655.71		\$78,655.71
300 <u>Purchased Professional and Technical Services</u>				
322 Professional Educational Services – Ius		13,650.00		13,650.00
Total Purchased Professional and Technical Services		\$13,650.00		\$13,650.00
400 <u>Purchased Property Services</u>				
430 Repairs and Maintenance Services		395.80		395.80
440 Rentals		2,759.16		2,759.16
Total Purchased Property Services		\$3,154.96		\$3,154.96
500 <u>Other Purchased Services</u>				
561 Tuition To Other School Districts Within the State	88,648.59	85,172.18		173,820.77
568 Tuition To Private Residential Rehabilitative Institutions (PRRI) [In-State] and Detention Centers		4,674.00		4,674.00
Total Other Purchased Services	\$88,648.59	\$89,846.18		\$178,494.77
600 <u>Supplies</u>				
620 Energy		1,173.48		1,173.48
Total Supplies		\$1,173.48		\$1,173.48
700 <u>Property</u>				
752 Capital Equipment – Original and Additional		80,157.97		80,157.97
Total Property		\$80,157.97		\$80,157.97
800 <u>Other Objects</u>				
810 Dues and Fees		42.00		42.00
Total Other Objects		\$42.00		\$42.00
Total 1400 Other Instructional Programs – Elementary / Secondary	\$88,648.59	\$404,919.20		\$493,567.79

LEA : 123465303 Methacton SD

Printed 10/24/2019 11:17:33 AM

General Fund (10)				
1410 Drivers' Education				
	<u>Elementary</u>	<u>Secondary</u>	<u>Federal</u>	<u>Total</u>
100 <u>Personnel Services – Salaries</u>				
100 Personnel Services – Salaries		127,346.65		127,346.65
Total Personnel Services – Salaries		\$127,346.65		\$127,346.65
200 <u>Personnel Services – Employee Benefits</u>				
210 Group Insurance – Contracted Provider		161.81		161.81
220 Social Security Contributions		9,421.87		9,421.87
230 PSERS Retirement Contributions		42,193.61		42,193.61
270 Group Insurance – Self-Insurance		22,407.72		22,407.72
Total Personnel Services – Employee Benefits		\$74,185.01		\$74,185.01
400 <u>Purchased Property Services</u>				
430 Repairs and Maintenance Services		395.80		395.80
440 Rentals		2,759.16		2,759.16
Total Purchased Property Services		\$3,154.96		\$3,154.96
600 <u>Supplies</u>				
620 Energy		1,173.48		1,173.48
Total Supplies		\$1,173.48		\$1,173.48
700 <u>Property</u>				
752 Capital Equipment – Original and Additional		80,157.97		80,157.97
Total Property		\$80,157.97		\$80,157.97
800 <u>Other Objects</u>				
810 Dues and Fees		42.00		42.00
Total Other Objects		\$42.00		\$42.00
Total 1410 Drivers' Education		\$286,060.07		\$286,060.07

LEA : 123465303 Methacton SD

Printed 10/24/2019 11:17:33 AM

General Fund (10)

1420 Summer School

	<u>Elementary</u>	<u>Secondary</u>	<u>Federal</u>	<u>Total</u>
100 <u>Personnel Services – Salaries</u>				
100 Personnel Services – Salaries		6,247.50		6,247.50
Total Personnel Services – Salaries		\$6,247.50		\$6,247.50
200 <u>Personnel Services – Employee Benefits</u>				
220 Social Security Contributions		481.36		481.36
230 PSERS Retirement Contributions		2,088.54		2,088.54
Total Personnel Services – Employee Benefits		\$2,569.90		\$2,569.90
300 <u>Purchased Professional and Technical Services</u>				
322 Professional Educational Services – Ius		13,650.00		13,650.00
Total Purchased Professional and Technical Services		\$13,650.00		\$13,650.00
Total 1420 Summer School		\$22,467.40		\$22,467.40

LEA : 123465303 Methacton SD

Printed 10/24/2019 11:17:33 AM

General Fund (10)

1430 Homebound Instruction	<u>Elementary</u>	<u>Secondary</u>	<u>Federal</u>	<u>Total</u>
100 <u>Personnel Services – Salaries</u>				
100 Personnel Services – Salaries		4,644.75		4,644.75
Total Personnel Services – Salaries		\$4,644.75		\$4,644.75
200 <u>Personnel Services – Employee Benefits</u>				
220 Social Security Contributions		348.05		348.05
230 PSERS Retirement Contributions		1,552.75		1,552.75
Total Personnel Services – Employee Benefits		\$1,900.80		\$1,900.80
Total 1430 Homebound Instruction		\$6,545.55		\$6,545.55

LEA : 123465303 Methacton SD

Printed 10/24/2019 11:17:33 AM

General Fund (10)

1440 Alternative Regular Education Programs	<u>Elementary</u>	<u>Secondary</u>	<u>Federal</u>	<u>Total</u>
500 <u>Other Purchased Services</u>				
561 Tuition To Other School Districts Within the State	88,648.59	85,172.18		173,820.77
568 Tuition To Private Residential Rehabilitative Institutions (PRRI) [In-State] and Detention Centers		4,674.00		4,674.00
Total Other Purchased Services	\$88,648.59	\$89,846.18		\$178,494.77
Total 1440 Alternative Regular Education Programs	\$88,648.59	\$89,846.18		\$178,494.77

LEA : 123465303 Methacton SD

Printed 10/24/2019 11:17:33 AM

General Fund (10)

1441 Adjudicated / Court-Placed Programs	<u>Elementary</u>	<u>Secondary</u>	<u>Federal</u>	<u>Total</u>
500 <u>Other Purchased Services</u>				
561 Tuition To Other School Districts Within the State	88,648.59	85,172.18		173,820.77
568 Tuition To Private Residential Rehabilitative Institutions (PRRI) [In-State] and Detention Centers		4,674.00		4,674.00
Total Other Purchased Services	\$88,648.59	\$89,846.18		\$178,494.77
Total 1441 Adjudicated / Court-Placed Programs	\$88,648.59	\$89,846.18		\$178,494.77

LEA : 123465303 Methacton SD

Printed 10/24/2019 11:17:33 AM

General Fund (10)

1500 Nonpublic School Programs

	<u>Elementary</u>	<u>Secondary</u>	<u>Federal</u>	<u>Total</u>
300 <u>Purchased Professional and Technical Services</u>				
322 Professional Educational Services – lus			7,490.00	7,490.00
Total Purchased Professional and Technical Services			\$7,490.00	\$7,490.00
Total 1500 Nonpublic School Programs			\$7,490.00	\$7,490.00

LEA : 123465303 Methacton SD

Printed 10/24/2019 11:17:33 AM

General Fund (10)				
1600 Adult Education Programs	<u>Elementary</u>	<u>Secondary</u>	<u>Federal</u>	<u>Total</u>
100 <u>Personnel Services – Salaries</u>				
100 Personnel Services – Salaries				8,933.00
Total Personnel Services – Salaries				\$8,933.00
200 <u>Personnel Services – Employee Benefits</u>				
220 Social Security Contributions				690.97
230 PSERS Retirement Contributions				610.26
Total Personnel Services – Employee Benefits				\$1,301.23
300 <u>Purchased Professional and Technical Services</u>				
330 Other Professional Services				116,192.23
Total Purchased Professional and Technical Services				\$116,192.23
500 <u>Other Purchased Services</u>				
530 Communications				1,600.00
550 Printing and Binding				10,362.64
Total Other Purchased Services				\$11,962.64
600 <u>Supplies</u>				
610 General Supplies				2,301.92
Total Supplies				\$2,301.92
Total 1600 Adult Education Programs				\$140,691.02

LEA : 123465303 Methacton SD

Printed 10/24/2019 11:17:42 AM

General Fund (10)

2000 Support Services

	Total
100 Personnel Services – Salaries	
100 Personnel Services – Salaries	12,630,241.63
Total Personnel Services – Salaries	\$12,630,241.63
200 Personnel Services – Employee Benefits	
210 Group Insurance – Contracted Provider	18,867.47
220 Social Security Contributions	907,534.54
230 PSERS Retirement Contributions	4,140,776.00
240 Tuition Reimbursement	137,544.15
260 Workers' Compensation	53,401.12
270 Group Insurance – Self-Insurance	2,462,783.96
299 All Other Employee Benefits	1,325.00
Total Personnel Services – Employee Benefits	\$7,722,232.24
300 Purchased Professional and Technical Services	
310 Official / Administrative Services	143,085.49
329 Professional Educational Services – Other	550.00
330 Other Professional Services	1,486,636.65
360 Employee Training and Development Services	92,140.94
390 Other Purchased Professional and Technical Services	177,038.48
Total Purchased Professional and Technical Services	\$1,899,451.56
400 Purchased Property Services	
410 Cleaning Services	75,228.90
420 Utility Services	167,703.22
430 Repairs and Maintenance Services	1,014,212.83
440 Rentals	226,834.72
460 Extermination Services	8,886.25
Total Purchased Property Services	\$1,492,865.92
500 Other Purchased Services	
513 Contracted Carriers	6,363,416.70
516 Student Transportation Services From the IU	645,784.96
519 Student Transportation Services From Other Sources	3,756.70
520 Insurance – General	207,843.75
530 Communications	137,090.56
549 Other Advertising/Public Relations	5,645.22
550 Printing and Binding	12,783.57
580 Travel	27,604.03
591 Services Purchased Locally	2,265.00
595 IU Payments By Withholding	67,838.45
596 Direct Payments To Intermediate Units	5,202.84
Total Other Purchased Services	\$7,479,231.78
600 Supplies	
610 General Supplies	510,074.86
620 Energy	1,234,779.83
630 Food	4,810.90
640 Books and Periodicals	53,277.41

LEA : 123465303 Methacton SD

Printed 10/24/2019 11:17:42 AM

General Fund (10)

2000 Support Services

Total

600 <u>Supplies</u>	
650 Supplies & Fees – Technology Related	286,666.68
Total Supplies	\$2,089,609.68
700 <u>Property</u>	
752 Capital Equipment – Original and Additional	87,356.87
762 Capitalized Equipment - Replacement	83,799.76
Total Property	\$171,156.63
800 <u>Other Objects</u>	
810 Dues and Fees	63,361.64
820 Claims and Judgments Against the LEA	695.84
890 Miscellaneous Expenditures	(2,409.96)
Total Other Objects	\$61,647.52
Total 2000 Support Services	\$33,546,436.96

LEA : 123465303 Methacton SD

Printed 10/24/2019 11:17:42 AM

General Fund (10)

2100 Support Services – Students	Elementary	Secondary	Federal	Total
100 <u>Personnel Services – Salaries</u>				
100 Personnel Services – Salaries	1,022,824.71	1,276,759.70		2,439,301.00
Total Personnel Services – Salaries	\$1,022,824.71	\$1,276,759.70		\$2,439,301.00
200 <u>Personnel Services – Employee Benefits</u>				
210 Group Insurance – Contracted Provider	1,992.06	2,226.60		4,424.94
220 Social Security Contributions	74,411.82	92,488.15		176,705.09
230 PSERS Retirement Contributions	339,224.23	424,669.90		810,576.88
260 Workers' Compensation	5,408.70	5,196.59		10,605.29
270 Group Insurance – Self-Insurance	177,184.84	277,017.76		516,413.00
Total Personnel Services – Employee Benefits	\$598,221.65	\$801,599.00		\$1,518,725.20
300 <u>Purchased Professional and Technical Services</u>				
330 Other Professional Services		156,591.40	14,340.77	558,991.40
Total Purchased Professional and Technical Services		\$156,591.40	\$14,340.77	\$558,991.40
500 <u>Other Purchased Services</u>				
580 Travel	2,449.83	1,108.05		3,828.88
Total Other Purchased Services	\$2,449.83	\$1,108.05		\$3,828.88
600 <u>Supplies</u>				
610 General Supplies	16,969.98	6,885.02	1,151.52	25,006.52
630 Food		30.00		30.00
640 Books and Periodicals		607.56	107.36	714.92
650 Supplies & Fees – Technology Related			29.95	29.95
Total Supplies	\$16,969.98	\$7,522.58	\$1,288.83	\$25,781.39
800 <u>Other Objects</u>				
810 Dues and Fees	318.75	535.25		924.00
890 Miscellaneous Expenditures		(3,049.96)	640.00	(2,409.96)
Total Other Objects	\$318.75	(\$2,514.71)	\$640.00	(\$1,485.96)
Total 2100 Support Services – Students	\$1,640,784.92	\$2,241,066.02	\$16,269.60	\$4,545,141.91

LEA : 123465303 Methacton SD

Printed 10/24/2019 11:17:42 AM

General Fund (10)				
2110 Supervision of Student Services	<u>Elementary</u>	<u>Secondary</u>	<u>Federal</u>	<u>Total</u>
100 <u>Personnel Services – Salaries</u>				
100 Personnel Services – Salaries	350,314.82	336,576.96		686,891.78
Total Personnel Services – Salaries	\$350,314.82	\$336,576.96		\$686,891.78
200 <u>Personnel Services – Employee Benefits</u>				
210 Group Insurance – Contracted Provider	726.20	697.72		1,423.92
220 Social Security Contributions	25,145.04	24,158.96		49,304.00
230 PSERS Retirement Contributions	115,410.15	110,884.27		226,294.42
270 Group Insurance – Self-Insurance	65,108.60	62,555.32		127,663.92
Total Personnel Services – Employee Benefits	\$206,389.99	\$198,296.27		\$404,686.26
500 <u>Other Purchased Services</u>				
580 Travel	2,161.96	856.89		3,018.85
Total Other Purchased Services	\$2,161.96	\$856.89		\$3,018.85
600 <u>Supplies</u>				
610 General Supplies	639.13	368.15		1,007.28
Total Supplies	\$639.13	\$368.15		\$1,007.28
800 <u>Other Objects</u>				
810 Dues and Fees	318.75	306.25		625.00
Total Other Objects	\$318.75	\$306.25		\$625.00
Total 2110 Supervision of Student Services	\$559,824.65	\$536,404.52		\$1,096,229.17

LEA : 123465303 Methacton SD

Printed 10/24/2019 11:17:42 AM

General Fund (10)				
2111 Supervision of Student Services – Head of Component	<u>Elementary</u>	<u>Secondary</u>	<u>Federal</u>	<u>Total</u>
100 <u>Personnel Services – Salaries</u>				
100 Personnel Services – Salaries	131,500.57	126,343.68		257,844.25
Total Personnel Services – Salaries	\$131,500.57	\$126,343.68		\$257,844.25
200 <u>Personnel Services – Employee Benefits</u>				
210 Group Insurance – Contracted Provider	208.63	200.45		409.08
220 Social Security Contributions	9,123.77	8,765.97		17,889.74
230 PSERS Retirement Contributions	43,198.55	41,504.49		84,703.04
270 Group Insurance – Self-Insurance	21,873.25	21,015.47		42,888.72
Total Personnel Services – Employee Benefits	\$74,404.20	\$71,486.38		\$145,890.58
500 <u>Other Purchased Services</u>				
580 Travel	378.40	363.57		741.97
Total Other Purchased Services	\$378.40	\$363.57		\$741.97
600 <u>Supplies</u>				
610 General Supplies	639.13	368.15		1,007.28
Total Supplies	\$639.13	\$368.15		\$1,007.28
800 <u>Other Objects</u>				
810 Dues and Fees	318.75	306.25		625.00
Total Other Objects	\$318.75	\$306.25		\$625.00
Total 2111 Supervision of Student Services – Head of Component	\$207,241.05	\$198,868.03		\$406,109.08

LEA : 123465303 Methacton SD

Printed 10/24/2019 11:17:42 AM

General Fund (10)

2119 Supervision of Student Services – All Other Supervision	<u>Elementary</u>	<u>Secondary</u>	<u>Federal</u>	<u>Total</u>
100 <u>Personnel Services – Salaries</u>				
100 Personnel Services – Salaries	218,814.25	210,233.28		429,047.53
Total Personnel Services – Salaries	\$218,814.25	\$210,233.28		\$429,047.53
200 <u>Personnel Services – Employee Benefits</u>				
210 Group Insurance – Contracted Provider	517.57	497.27		1,014.84
220 Social Security Contributions	16,021.27	15,392.99		31,414.26
230 PSERS Retirement Contributions	72,211.60	69,379.78		141,591.38
270 Group Insurance – Self-Insurance	43,235.35	41,539.85		84,775.20
Total Personnel Services – Employee Benefits	\$131,985.79	\$126,809.89		\$258,795.68
500 <u>Other Purchased Services</u>				
580 Travel	1,783.56	493.32		2,276.88
Total Other Purchased Services	\$1,783.56	\$493.32		\$2,276.88
Total 2119 Supervision of Student Services – All Other Supervision	\$352,583.60	\$337,536.49		\$690,120.09

LEA : 123465303 Methacton SD

Printed 10/24/2019 11:17:42 AM

General Fund (10)

2120 Guidance Services	Elementary	Secondary	Federal	Total
100 <u>Personnel Services – Salaries</u>				
100 Personnel Services – Salaries	455,619.95	887,632.68		1,343,252.63
Total Personnel Services – Salaries	\$455,619.95	\$887,632.68		\$1,343,252.63
200 <u>Personnel Services – Employee Benefits</u>				
210 Group Insurance – Contracted Provider	1,094.02	1,482.98		2,577.00
220 Social Security Contributions	33,687.10	64,535.67		98,222.77
230 PSERS Retirement Contributions	151,307.71	296,360.18		447,667.89
260 Workers' Compensation	5,408.70	5,196.59		10,605.29
270 Group Insurance – Self-Insurance	56,409.56	199,113.52		255,523.08
Total Personnel Services – Employee Benefits	\$247,907.09	\$566,688.94		\$814,596.03
300 <u>Purchased Professional and Technical Services</u>				
330 Other Professional Services		9,438.00		9,438.00
Total Purchased Professional and Technical Services		\$9,438.00		\$9,438.00
500 <u>Other Purchased Services</u>				
580 Travel		251.16		251.16
Total Other Purchased Services		\$251.16		\$251.16
600 <u>Supplies</u>				
610 General Supplies	1,858.88	1,981.15	1,151.52	4,991.55
630 Food		30.00		30.00
640 Books and Periodicals		607.56	107.36	714.92
650 Supplies & Fees – Technology Related			29.95	29.95
Total Supplies	\$1,858.88	\$2,618.71	\$1,288.83	\$5,766.42
800 <u>Other Objects</u>				
810 Dues and Fees		229.00		229.00
890 Miscellaneous Expenditures		(3,049.96)	640.00	(2,409.96)
Total Other Objects		(\$2,820.96)	\$640.00	(\$2,180.96)
Total 2120 Guidance Services	\$705,385.92	\$1,463,808.53	\$1,928.83	\$2,171,123.28

LEA : 123465303 Methacton SD

Printed 10/24/2019 11:17:42 AM

General Fund (10)

2130 Attendance Services

Elementary Secondary Federal Total

100 <u>Personnel Services – Salaries</u>				
100 Personnel Services – Salaries				139,716.59
Total Personnel Services – Salaries				\$139,716.59
200 <u>Personnel Services – Employee Benefits</u>				
210 Group Insurance – Contracted Provider				206.28
220 Social Security Contributions				9,805.12
230 PSERS Retirement Contributions				46,682.75
270 Group Insurance – Self-Insurance				62,210.40
Total Personnel Services – Employee Benefits				\$118,904.55
500 <u>Other Purchased Services</u>				
580 Travel				271.00
Total Other Purchased Services				\$271.00
800 <u>Other Objects</u>				
810 Dues and Fees				70.00
Total Other Objects				\$70.00
Total 2130 Attendance Services				\$258,962.14

LEA : 123465303 Methacton SD

Printed 10/24/2019 11:17:42 AM

General Fund (10)				
2140 Psychological Services	<u>Elementary</u>	<u>Secondary</u>	<u>Federal</u>	<u>Total</u>
100 <u>Personnel Services – Salaries</u>				
100 Personnel Services – Salaries	216,889.94	52,550.06		269,440.00
Total Personnel Services – Salaries	\$216,889.94	\$52,550.06		\$269,440.00
200 <u>Personnel Services – Employee Benefits</u>				
210 Group Insurance – Contracted Provider	171.84	45.90		217.74
220 Social Security Contributions	15,579.68	3,793.52		19,373.20
230 PSERS Retirement Contributions	72,506.37	17,425.45		89,931.82
270 Group Insurance – Self-Insurance	55,666.68	15,348.92		71,015.60
Total Personnel Services – Employee Benefits	\$143,924.57	\$36,613.79		\$180,538.36
300 <u>Purchased Professional and Technical Services</u>				
330 Other Professional Services		147,153.40		147,153.40
Total Purchased Professional and Technical Services		\$147,153.40		\$147,153.40
500 <u>Other Purchased Services</u>				
580 Travel	287.87			287.87
Total Other Purchased Services	\$287.87			\$287.87
600 <u>Supplies</u>				
610 General Supplies	14,471.97	4,535.72		19,007.69
Total Supplies	\$14,471.97	\$4,535.72		\$19,007.69
Total 2140 Psychological Services	\$375,574.35	\$240,852.97		\$616,427.32

LEA : 123465303 Methacton SD

Printed 10/24/2019 11:17:42 AM

General Fund (10)

2160 Social Work Services

<u>Elementary</u>	<u>Secondary</u>	<u>Federal</u>	<u>Total</u>
-------------------	------------------	----------------	--------------

300 Purchased Professional and Technical Services

330 Other Professional Services		14,340.77	402,400.00
---------------------------------	--	-----------	------------

Total Purchased Professional and Technical Services		\$14,340.77	\$402,400.00
--	--	--------------------	---------------------

Total 2160 Social Work Services		\$14,340.77	\$402,400.00
--	--	--------------------	---------------------

LEA : 123465303 Methacton SD

Printed 10/24/2019 11:17:42 AM

General Fund (10)				
2200 Support Services – Instructional Staff	<u>Elementary</u>	<u>Secondary</u>	<u>Federal</u>	<u>Total</u>
100 <u>Personnel Services – Salaries</u>				
100 Personnel Services – Salaries	827,161.15	514,701.05	61,055.72	1,402,917.92
Total Personnel Services – Salaries	\$827,161.15	\$514,701.05	\$61,055.72	\$1,402,917.92
200 <u>Personnel Services – Employee Benefits</u>				
210 Group Insurance – Contracted Provider	1,007.14	785.96	28.65	1,821.75
220 Social Security Contributions	59,553.12	37,109.87	4,035.75	100,698.74
230 PSERS Retirement Contributions	274,276.90	170,016.14	20,930.28	465,223.32
240 Tuition Reimbursement	64,647.70	43,751.45		108,399.15
260 Workers' Compensation	3,105.93	2,984.13		6,090.06
270 Group Insurance – Self-Insurance	165,393.34	84,675.83	9,250.60	259,319.77
Total Personnel Services – Employee Benefits	\$567,984.13	\$339,323.38	\$34,245.28	\$941,552.79
300 <u>Purchased Professional and Technical Services</u>				
329 Professional Educational Services – Other			550.00	550.00
360 Employee Training and Development Services	34,048.80	32,713.56	2,670.00	69,432.36
Total Purchased Professional and Technical Services	\$34,048.80	\$32,713.56	\$3,220.00	\$69,982.36
400 <u>Purchased Property Services</u>				
430 Repairs and Maintenance Services		295.00		295.00
Total Purchased Property Services		\$295.00		\$295.00
500 <u>Other Purchased Services</u>				
530 Communications	11.00			11.00
580 Travel	2,548.48	2,420.68	60.50	5,029.66
591 Services Purchased Locally		2,200.00		2,200.00
Total Other Purchased Services	\$2,559.48	\$4,620.68	\$60.50	\$7,240.66
600 <u>Supplies</u>				
610 General Supplies	14,901.31	39,790.05		54,691.36
630 Food	523.05	502.54		1,025.59
640 Books and Periodicals	28,034.82	21,770.17		49,804.99
650 Supplies & Fees – Technology Related	55.00	4,607.95		4,662.95
Total Supplies	\$43,514.18	\$66,670.71		\$110,184.89
700 <u>Property</u>				
752 Capital Equipment – Original and Additional		630.76		630.76
Total Property		\$630.76		\$630.76
800 <u>Other Objects</u>				
810 Dues and Fees	1,377.79	210.21	115.00	1,703.00
Total Other Objects	\$1,377.79	\$210.21	\$115.00	\$1,703.00
Total 2200 Support Services – Instructional Staff	\$1,476,645.53	\$959,165.35	\$98,696.50	\$2,534,507.38

LEA : 123465303 Methacton SD

Printed 10/24/2019 11:17:42 AM

General Fund (10)				
2220 Technology Support Services	<u>Elementary</u>	<u>Secondary</u>	<u>Federal</u>	<u>Total</u>
100 <u>Personnel Services – Salaries</u>				
100 Personnel Services – Salaries	204,712.50	110,125.00		314,837.50
Total Personnel Services – Salaries	\$204,712.50	\$110,125.00		\$314,837.50
200 <u>Personnel Services – Employee Benefits</u>				
210 Group Insurance – Contracted Provider	93.72	68.76		162.48
220 Social Security Contributions	15,075.87	8,238.32		23,314.19
230 PSERS Retirement Contributions	68,364.28	36,814.76		105,179.04
270 Group Insurance – Self-Insurance	31,302.24	11,959.44		43,261.68
Total Personnel Services – Employee Benefits	\$114,836.11	\$57,081.28		\$171,917.39
600 <u>Supplies</u>				
610 General Supplies	8,083.69	32,046.36		40,130.05
650 Supplies & Fees – Technology Related	55.00	4,557.95		4,612.95
Total Supplies	\$8,138.69	\$36,604.31		\$44,743.00
700 <u>Property</u>				
752 Capital Equipment – Original and Additional		630.76		630.76
Total Property		\$630.76		\$630.76
Total 2220 Technology Support Services	\$327,687.30	\$204,441.35		\$532,128.65

LEA : 123465303 Methacton SD

Printed 10/24/2019 11:17:42 AM

General Fund (10)					
2250 School Library Services		Elementary	Secondary	Federal	Total
100 Personnel Services – Salaries					
100 Personnel Services – Salaries		385,634.50	186,361.44		571,995.94
Total Personnel Services – Salaries		\$385,634.50	\$186,361.44		\$571,995.94
200 Personnel Services – Employee Benefits					
210 Group Insurance – Contracted Provider		857.89	663.86		1,521.75
220 Social Security Contributions		27,746.94	13,463.42		41,210.36
230 PSERS Retirement Contributions		128,678.18	62,109.19		190,787.37
260 Workers' Compensation		3,105.93	2,984.13		6,090.06
270 Group Insurance – Self-Insurance		107,001.49	46,689.12		153,690.61
Total Personnel Services – Employee Benefits		\$267,390.43	\$125,909.72		\$393,300.15
400 Purchased Property Services					
430 Repairs and Maintenance Services			295.00		295.00
Total Purchased Property Services			\$295.00		\$295.00
500 Other Purchased Services					
591 Services Purchased Locally			2,200.00		2,200.00
Total Other Purchased Services			\$2,200.00		\$2,200.00
600 Supplies					
610 General Supplies		1,131.33	2,932.64		4,063.97
640 Books and Periodicals		27,381.48	21,708.46		49,089.94
650 Supplies & Fees – Technology Related			50.00		50.00
Total Supplies		\$28,512.81	\$24,691.10		\$53,203.91
Total 2250 School Library Services		\$681,537.74	\$339,457.26		\$1,020,995.00

LEA : 123465303 Methacton SD

Printed 10/24/2019 11:17:42 AM

General Fund (10)				
2260 Instruction and Curriculum Development Services	<u>Elementary</u>	<u>Secondary</u>	<u>Federal</u>	<u>Total</u>
100 <u>Personnel Services – Salaries</u>				
100 Personnel Services – Salaries	193,170.46	176,282.43		369,452.89
Total Personnel Services – Salaries	\$193,170.46	\$176,282.43		\$369,452.89
200 <u>Personnel Services – Employee Benefits</u>				
210 Group Insurance – Contracted Provider	35.07	33.69		68.76
220 Social Security Contributions	13,538.07	12,341.07		25,879.14
230 PSERS Retirement Contributions	63,791.38	58,176.31		121,967.69
270 Group Insurance – Self-Insurance	20,379.48	19,580.28		39,959.76
Total Personnel Services – Employee Benefits	\$97,744.00	\$90,131.35		\$187,875.35
300 <u>Purchased Professional and Technical Services</u>				
329 Professional Educational Services – Other			550.00	550.00
Total Purchased Professional and Technical Services			\$550.00	\$550.00
500 <u>Other Purchased Services</u>				
530 Communications	11.00			11.00
Total Other Purchased Services	\$11.00			\$11.00
600 <u>Supplies</u>				
610 General Supplies	678.87			678.87
630 Food	3.06	2.94		6.00
640 Books and Periodicals	643.58	52.33		695.91
Total Supplies	\$1,325.51	\$55.27		\$1,380.78
800 <u>Other Objects</u>				
810 Dues and Fees	1,159.00			1,159.00
Total Other Objects	\$1,159.00			\$1,159.00
Total 2260 Instruction and Curriculum Development Services	\$293,409.97	\$266,469.05	\$550.00	\$560,429.02

LEA : 123465303 Methacton SD

Printed 10/24/2019 11:17:42 AM

General Fund (10)

2270 Instructional Staff Professional Development Services	Elementary	Secondary	Federal	Total
100 Personnel Services – Salaries				
100 Personnel Services – Salaries	43,643.69	41,932.18	61,055.72	146,631.59
Total Personnel Services – Salaries	\$43,643.69	\$41,932.18	\$61,055.72	\$146,631.59
200 Personnel Services – Employee Benefits				
210 Group Insurance – Contracted Provider	20.46	19.65	28.65	68.76
220 Social Security Contributions	3,192.24	3,067.06	4,035.75	10,295.05
230 PSERS Retirement Contributions	13,443.06	12,915.88	20,930.28	47,289.22
240 Tuition Reimbursement	64,647.70	43,751.45		108,399.15
270 Group Insurance – Self-Insurance	6,710.13	6,446.99	9,250.60	22,407.72
Total Personnel Services – Employee Benefits	\$88,013.59	\$66,201.03	\$34,245.28	\$188,459.90
300 Purchased Professional and Technical Services				
360 Employee Training and Development Services	34,048.80	32,713.56	2,670.00	69,432.36
Total Purchased Professional and Technical Services	\$34,048.80	\$32,713.56	\$2,670.00	\$69,432.36
500 Other Purchased Services				
580 Travel	2,548.48	2,420.68	60.50	5,029.66
Total Other Purchased Services	\$2,548.48	\$2,420.68	\$60.50	\$5,029.66
600 Supplies				
610 General Supplies	5,007.42	4,811.05		9,818.47
630 Food	519.99	499.60		1,019.59
640 Books and Periodicals	9.76	9.38		19.14
Total Supplies	\$5,537.17	\$5,320.03		\$10,857.20
800 Other Objects				
810 Dues and Fees	218.79	210.21		429.00
Total Other Objects	\$218.79	\$210.21		\$429.00
Total 2270 Instructional Staff Professional Development Services	\$174,010.52	\$148,797.69	\$98,031.50	\$420,839.71

LEA : 123465303 Methacton SD

Printed 10/24/2019 11:17:42 AM

General Fund (10)				
2280 Nonpublic Support Services	<u>Elementary</u>	<u>Secondary</u>	<u>Federal</u>	<u>Total</u>
800 <u>Other Objects</u>				
810 Dues and Fees			115.00	115.00
Total Other Objects			\$115.00	\$115.00
Total 2280 Nonpublic Support Services			\$115.00	\$115.00

LEA : 123465303 Methacton SD

Printed 10/24/2019 11:17:42 AM

General Fund (10)

2300 Support Services – Administration	Elementary	Secondary	Federal	Total
100 <u>Personnel Services – Salaries</u>				
100 Personnel Services – Salaries	1,333,780.97	1,309,591.41		3,346,314.11
Total Personnel Services – Salaries	\$1,333,780.97	\$1,309,591.41		\$3,346,314.11
200 <u>Personnel Services – Employee Benefits</u>				
210 Group Insurance – Contracted Provider	2,066.45	1,849.82		4,239.20
220 Social Security Contributions	93,007.75	93,463.40		234,466.32
230 PSERS Retirement Contributions	437,631.10	425,254.11		1,074,103.75
260 Workers' Compensation	7,253.52	6,969.07		14,222.59
270 Group Insurance – Self-Insurance	314,188.03	210,442.53		635,379.30
Total Personnel Services – Employee Benefits	\$854,146.85	\$737,978.93		\$1,962,411.16
300 <u>Purchased Professional and Technical Services</u>				
310 Official / Administrative Services				143,085.49
330 Other Professional Services				493,033.94
390 Other Purchased Professional and Technical Services				999.00
Total Purchased Professional and Technical Services				\$637,118.43
400 <u>Purchased Property Services</u>				
440 Rentals		4,480.00		4,480.00
Total Purchased Property Services		\$4,480.00		\$4,480.00
500 <u>Other Purchased Services</u>				
530 Communications				5,633.51
549 Other Advertising/Public Relations				5,645.22
550 Printing and Binding	363.31	9,844.76		12,783.57
580 Travel	937.55	681.55		13,941.94
591 Services Purchased Locally		65.00		65.00
Total Other Purchased Services	\$1,300.86	\$10,591.31		\$38,069.24
600 <u>Supplies</u>				
610 General Supplies	2,621.62	4,965.52		(33,842.53)
630 Food		1,176.36		3,755.31
640 Books and Periodicals	399.21	703.29		2,491.50
650 Supplies & Fees – Technology Related	59.00	104.00		416.88
Total Supplies	\$3,079.83	\$6,949.17		(\$27,178.84)
700 <u>Property</u>				
762 Capitalized Equipment - Replacement				(14,895.00)
Total Property				(\$14,895.00)
800 <u>Other Objects</u>				
810 Dues and Fees	3,971.93	(2,848.60)		24,681.18
820 Claims and Judgments Against the LEA				695.84
Total Other Objects	\$3,971.93	(\$2,848.60)		\$25,377.02
Total 2300 Support Services – Administration	\$2,196,280.44	\$2,066,742.22		\$5,971,696.12

LEA : 123465303 Methacton SD

Printed 10/24/2019 11:17:42 AM

General Fund (10)				
2310 Board Services	<u>Elementary</u>	<u>Secondary</u>	<u>Federal</u>	<u>Total</u>
300 <u>Purchased Professional and Technical Services</u>				
330 Other Professional Services				2,475.00
Total Purchased Professional and Technical Services				\$2,475.00
500 <u>Other Purchased Services</u>				
549 Other Advertising/Public Relations				1,798.57
580 Travel				5,047.54
Total Other Purchased Services				\$6,846.11
600 <u>Supplies</u>				
610 General Supplies				918.00
Total Supplies				\$918.00
800 <u>Other Objects</u>				
810 Dues and Fees				15,025.00
820 Claims and Judgments Against the LEA				695.84
Total Other Objects				\$15,720.84
Total 2310 Board Services				\$25,959.95

LEA : 123465303 Methacton SD

Printed 10/24/2019 11:17:42 AM

General Fund (10)				
2330 Tax Assessment and Collection Services	<u>Elementary</u>	<u>Secondary</u>	<u>Federal</u>	<u>Total</u>
100 <u>Personnel Services – Salaries</u>				
100 Personnel Services – Salaries				43,781.30
Total Personnel Services – Salaries				\$43,781.30
200 <u>Personnel Services – Employee Benefits</u>				
220 Social Security Contributions				3,348.87
Total Personnel Services – Employee Benefits				\$3,348.87
300 <u>Purchased Professional and Technical Services</u>				
310 Official / Administrative Services				143,085.49
330 Other Professional Services				68,753.00
Total Purchased Professional and Technical Services				\$211,838.49
600 <u>Supplies</u>				
610 General Supplies				11,153.16
Total Supplies				\$11,153.16
Total 2330 Tax Assessment and Collection Services				\$270,121.82

LEA : 123465303 Methacton SD

Printed 10/24/2019 11:17:42 AM

General Fund (10)				
2340 Staff Relations and Negotiations Services	<u>Elementary</u>	<u>Secondary</u>	<u>Federal</u>	<u>Total</u>
100 <u>Personnel Services – Salaries</u>				
100 Personnel Services – Salaries				254,516.09
Total Personnel Services – Salaries				\$254,516.09
200 <u>Personnel Services – Employee Benefits</u>				
210 Group Insurance – Contracted Provider				162.49
220 Social Security Contributions				18,727.62
230 PSERS Retirement Contributions				83,212.36
270 Group Insurance – Self-Insurance				46,575.12
Total Personnel Services – Employee Benefits				\$148,677.59
300 <u>Purchased Professional and Technical Services</u>				
330 Other Professional Services				8,928.00
390 Other Purchased Professional and Technical Services				999.00
Total Purchased Professional and Technical Services				\$9,927.00
500 <u>Other Purchased Services</u>				
549 Other Advertising/Public Relations				3,846.65
580 Travel				1,644.28
Total Other Purchased Services				\$5,490.93
600 <u>Supplies</u>				
610 General Supplies				1,829.84
630 Food				273.04
640 Books and Periodicals				165.00
Total Supplies				\$2,267.88
800 <u>Other Objects</u>				
810 Dues and Fees				1,356.85
Total Other Objects				\$1,356.85
Total 2340 Staff Relations and Negotiations Services				\$422,236.34

LEA : 123465303 Methacton SD

Printed 10/24/2019 11:17:42 AM

General Fund (10)

2350 Legal and Accounting Services	<u>Elementary</u>	<u>Secondary</u>	<u>Federal</u>	<u>Total</u>
300 <u>Purchased Professional and Technical Services</u>				
330 Other Professional Services				359,718.05
Total Purchased Professional and Technical Services				\$359,718.05
Total 2350 Legal and Accounting Services				\$359,718.05

LEA : 123465303 Methacton SD

Printed 10/24/2019 11:17:42 AM

General Fund (10)

2360 Office of the Superintendent / Executive Director Services	<u>Elementary</u>	<u>Secondary</u>	<u>Federal</u>	<u>Total</u>
100 <u>Personnel Services – Salaries</u>				
100 Personnel Services – Salaries				261,423.48
Total Personnel Services – Salaries				\$261,423.48
200 <u>Personnel Services – Employee Benefits</u>				
210 Group Insurance – Contracted Provider				68.76
220 Social Security Contributions				15,491.33
230 PSERS Retirement Contributions				85,446.41
270 Group Insurance – Self-Insurance				39,164.28
Total Personnel Services – Employee Benefits				\$140,170.78
300 <u>Purchased Professional and Technical Services</u>				
330 Other Professional Services				19,922.47
Total Purchased Professional and Technical Services				\$19,922.47
500 <u>Other Purchased Services</u>				
580 Travel				5,504.28
Total Other Purchased Services				\$5,504.28
600 <u>Supplies</u>				
610 General Supplies				(59,592.45)
630 Food				2,236.73
640 Books and Periodicals				1,224.00
Total Supplies				(\$56,131.72)
800 <u>Other Objects</u>				
810 Dues and Fees				6,576.00
Total Other Objects				\$6,576.00
Total 2360 Office of the Superintendent / Executive Director Services				\$377,465.29

LEA : 123465303 Methacton SD

Printed 10/24/2019 11:17:42 AM

General Fund (10)				
2370 Community Relations Services	<u>Elementary</u>	<u>Secondary</u>	<u>Federal</u>	<u>Total</u>
100 <u>Personnel Services – Salaries</u>				
100 Personnel Services – Salaries				143,220.86
Total Personnel Services – Salaries				\$143,220.86
200 <u>Personnel Services – Employee Benefits</u>				
210 Group Insurance – Contracted Provider				91.68
220 Social Security Contributions				10,427.35
230 PSERS Retirement Contributions				42,559.77
270 Group Insurance – Self-Insurance				25,009.34
Total Personnel Services – Employee Benefits				\$78,088.14
300 <u>Purchased Professional and Technical Services</u>				
330 Other Professional Services				987.42
Total Purchased Professional and Technical Services				\$987.42
500 <u>Other Purchased Services</u>				
530 Communications				5,633.51
550 Printing and Binding				2,575.50
580 Travel				126.74
Total Other Purchased Services				\$8,335.75
600 <u>Supplies</u>				
610 General Supplies				4,261.78
630 Food				69.18
650 Supplies & Fees – Technology Related				253.88
Total Supplies				\$4,584.84
800 <u>Other Objects</u>				
810 Dues and Fees				600.00
Total Other Objects				\$600.00
Total 2370 Community Relations Services				\$235,817.01

LEA : 123465303 Methacton SD

Printed 10/24/2019 11:17:42 AM

General Fund (10)

2380 Office of the Principal Services	Elementary	Secondary	Federal	Total
100 <u>Personnel Services – Salaries</u>				
100 Personnel Services – Salaries	1,333,780.97	1,309,591.41		2,643,372.38
Total Personnel Services – Salaries	\$1,333,780.97	\$1,309,591.41		\$2,643,372.38
200 <u>Personnel Services – Employee Benefits</u>				
210 Group Insurance – Contracted Provider	2,066.45	1,849.82		3,916.27
220 Social Security Contributions	93,007.75	93,463.40		186,471.15
230 PSERS Retirement Contributions	437,631.10	425,254.11		862,885.21
260 Workers' Compensation	7,253.52	6,969.07		14,222.59
270 Group Insurance – Self-Insurance	314,188.03	210,442.53		524,630.56
Total Personnel Services – Employee Benefits	\$854,146.85	\$737,978.93		\$1,592,125.78
400 <u>Purchased Property Services</u>				
440 Rentals		4,480.00		4,480.00
Total Purchased Property Services		\$4,480.00		\$4,480.00
500 <u>Other Purchased Services</u>				
550 Printing and Binding	363.31	9,844.76		10,208.07
580 Travel	937.55	681.55		1,619.10
591 Services Purchased Locally		65.00		65.00
Total Other Purchased Services	\$1,300.86	\$10,591.31		\$11,892.17
600 <u>Supplies</u>				
610 General Supplies	2,621.62	4,965.52		7,587.14
630 Food		1,176.36		1,176.36
640 Books and Periodicals	399.21	703.29		1,102.50
650 Supplies & Fees – Technology Related	59.00	104.00		163.00
Total Supplies	\$3,079.83	\$6,949.17		\$10,029.00
800 <u>Other Objects</u>				
810 Dues and Fees	3,971.93	(2,848.60)		1,123.33
Total Other Objects	\$3,971.93	(\$2,848.60)		\$1,123.33
Total 2380 Office of the Principal Services	\$2,196,280.44	\$2,066,742.22		\$4,263,022.66

LEA : 123465303 Methacton SD

Printed 10/24/2019 11:17:42 AM

General Fund (10)

2390 Other Administration Services	<u>Elementary</u>	<u>Secondary</u>	<u>Federal</u>	<u>Total</u>
300 <u>Purchased Professional and Technical Services</u>				
330 Other Professional Services				32,250.00
Total Purchased Professional and Technical Services				\$32,250.00
700 <u>Property</u>				
762 Capitalized Equipment - Replacement				(14,895.00)
Total Property				(\$14,895.00)
Total 2390 Other Administration Services				\$17,355.00

LEA : 123465303 Methacton SD

Printed 10/24/2019 11:17:42 AM

General Fund (10)				
2400 Support Services – Pupil Health	<u>Elementary</u>	<u>Secondary</u>	<u>Federal</u>	<u>Total</u>
100 <u>Personnel Services – Salaries</u>				
100 Personnel Services – Salaries				794,122.31
Total Personnel Services – Salaries				\$794,122.31
200 <u>Personnel Services – Employee Benefits</u>				
210 Group Insurance – Contracted Provider				1,161.16
220 Social Security Contributions				57,623.74
230 PSERS Retirement Contributions				264,401.25
260 Workers' Compensation				3,029.66
270 Group Insurance – Self-Insurance				180,346.01
Total Personnel Services – Employee Benefits				\$506,561.82
300 <u>Purchased Professional and Technical Services</u>				
330 Other Professional Services				377,342.67
Total Purchased Professional and Technical Services				\$377,342.67
500 <u>Other Purchased Services</u>				
580 Travel				310.00
Total Other Purchased Services				\$310.00
600 <u>Supplies</u>				
610 General Supplies				15,752.38
640 Books and Periodicals				266.00
Total Supplies				\$16,018.38
Total 2400 Support Services – Pupil Health				\$1,694,355.18

LEA : 123465303 Methacton SD

Printed 10/24/2019 11:17:42 AM

General Fund (10)

2420 Medical Services

Elementary Secondary Federal Total

100 <u>Personnel Services – Salaries</u>				
100 Personnel Services – Salaries				82,816.00
Total Personnel Services – Salaries				\$82,816.00
200 <u>Personnel Services – Employee Benefits</u>				
210 Group Insurance – Contracted Provider				68.76
220 Social Security Contributions				5,917.34
230 PSERS Retirement Contributions				27,628.50
270 Group Insurance – Self-Insurance				22,407.72
Total Personnel Services – Employee Benefits				\$56,022.32
300 <u>Purchased Professional and Technical Services</u>				
330 Other Professional Services				246,685.17
Total Purchased Professional and Technical Services				\$246,685.17
600 <u>Supplies</u>				
610 General Supplies				1,189.58
Total Supplies				\$1,189.58
Total 2420 Medical Services				\$386,713.07

LEA : 123465303 Methacton SD

Printed 10/24/2019 11:17:42 AM

General Fund (10)

2430 Dental Services

	<u>Elementary</u>	<u>Secondary</u>	<u>Federal</u>	<u>Total</u>
300 <u>Purchased Professional and Technical Services</u>				
330 Other Professional Services				144.00
Total Purchased Professional and Technical Services				\$144.00
Total 2430 Dental Services				\$144.00

LEA : 123465303 Methacton SD

Printed 10/24/2019 11:17:42 AM

General Fund (10)				
2440 Nursing Services				
	<u>Elementary</u>	<u>Secondary</u>	<u>Federal</u>	<u>Total</u>
100 <u>Personnel Services – Salaries</u>				
100 Personnel Services – Salaries				711,306.31
Total Personnel Services – Salaries				\$711,306.31
200 <u>Personnel Services – Employee Benefits</u>				
210 Group Insurance – Contracted Provider				1,092.40
220 Social Security Contributions				51,706.40
230 PSERS Retirement Contributions				236,772.75
260 Workers' Compensation				3,029.66
270 Group Insurance – Self-Insurance				157,938.29
Total Personnel Services – Employee Benefits				\$450,539.50
300 <u>Purchased Professional and Technical Services</u>				
330 Other Professional Services				130,513.50
Total Purchased Professional and Technical Services				\$130,513.50
500 <u>Other Purchased Services</u>				
580 Travel				310.00
Total Other Purchased Services				\$310.00
600 <u>Supplies</u>				
610 General Supplies				14,562.80
640 Books and Periodicals				266.00
Total Supplies				\$14,828.80
Total 2440 Nursing Services				\$1,307,498.11

LEA : 123465303 Methacton SD

Printed 10/24/2019 11:17:42 AM

General Fund (10)				
2500 Support Services – Business	<u>Elementary</u>	<u>Secondary</u>	<u>Federal</u>	<u>Total</u>
100 <u>Personnel Services – Salaries</u>				
100 Personnel Services – Salaries				460,590.19
Total Personnel Services – Salaries				\$460,590.19
200 <u>Personnel Services – Employee Benefits</u>				
210 Group Insurance – Contracted Provider				861.96
220 Social Security Contributions				32,435.91
230 PSERS Retirement Contributions				152,484.47
260 Workers' Compensation				2,102.47
270 Group Insurance – Self-Insurance				105,080.46
Total Personnel Services – Employee Benefits				\$292,965.27
300 <u>Purchased Professional and Technical Services</u>				
330 Other Professional Services				31,311.43
Total Purchased Professional and Technical Services				\$31,311.43
400 <u>Purchased Property Services</u>				
440 Rentals				38,420.00
Total Purchased Property Services				\$38,420.00
500 <u>Other Purchased Services</u>				
520 Insurance – General				207,843.75
530 Communications				11,420.89
580 Travel				185.52
Total Other Purchased Services				\$219,450.16
600 <u>Supplies</u>				
610 General Supplies				2,760.47
650 Supplies & Fees – Technology Related				125.08
Total Supplies				\$2,885.55
800 <u>Other Objects</u>				
810 Dues and Fees				20,931.46
Total Other Objects				\$20,931.46
Total 2500 Support Services – Business				\$1,066,554.06

LEA : 123465303 Methacton SD

Printed 10/24/2019 11:17:42 AM

General Fund (10)				
2510 Fiscal Services	<u>Elementary</u>	<u>Secondary</u>	<u>Federal</u>	<u>Total</u>
100 <u>Personnel Services – Salaries</u>				
100 Personnel Services – Salaries				460,590.19
Total Personnel Services – Salaries				\$460,590.19
200 <u>Personnel Services – Employee Benefits</u>				
210 Group Insurance – Contracted Provider				861.96
220 Social Security Contributions				32,435.91
230 PSERS Retirement Contributions				152,484.47
260 Workers' Compensation				2,102.47
270 Group Insurance – Self-Insurance				105,080.46
Total Personnel Services – Employee Benefits				\$292,965.27
300 <u>Purchased Professional and Technical Services</u>				
330 Other Professional Services				31,311.43
Total Purchased Professional and Technical Services				\$31,311.43
500 <u>Other Purchased Services</u>				
530 Communications				1,274.09
580 Travel				185.52
Total Other Purchased Services				\$1,459.61
600 <u>Supplies</u>				
610 General Supplies				2,491.43
650 Supplies & Fees – Technology Related				125.08
Total Supplies				\$2,616.51
800 <u>Other Objects</u>				
810 Dues and Fees				20,931.46
Total Other Objects				\$20,931.46
Total 2510 Fiscal Services				\$809,874.47

LEA : 123465303 Methacton SD

Printed 10/24/2019 11:17:42 AM

General Fund (10)				
2511 Supervision of Fiscal Services - Head of Component	<u>Elementary</u>	<u>Secondary</u>	<u>Federal</u>	<u>Total</u>
100 <u>Personnel Services – Salaries</u>				
100 Personnel Services – Salaries				153,164.86
Total Personnel Services – Salaries				\$153,164.86
200 <u>Personnel Services – Employee Benefits</u>				
210 Group Insurance – Contracted Provider				315.36
220 Social Security Contributions				10,366.66
230 PSERS Retirement Contributions				49,698.13
270 Group Insurance – Self-Insurance				22,407.72
Total Personnel Services – Employee Benefits				\$82,787.87
300 <u>Purchased Professional and Technical Services</u>				
330 Other Professional Services				13,500.00
Total Purchased Professional and Technical Services				\$13,500.00
500 <u>Other Purchased Services</u>				
530 Communications				111.90
580 Travel				160.58
Total Other Purchased Services				\$272.48
600 <u>Supplies</u>				
650 Supplies & Fees – Technology Related				125.08
Total Supplies				\$125.08
800 <u>Other Objects</u>				
810 Dues and Fees				7,734.12
Total Other Objects				\$7,734.12
Total 2511 Supervision of Fiscal Services - Head of Component				\$257,584.41

LEA : 123465303 Methacton SD

Printed 10/24/2019 11:17:42 AM

General Fund (10)

2513 Receiving and Disbursing Funds Services

Elementary Secondary Federal Total

100 <u>Personnel Services – Salaries</u>				
100 Personnel Services – Salaries				52,942.50
Total Personnel Services – Salaries				\$52,942.50
200 <u>Personnel Services – Employee Benefits</u>				
210 Group Insurance – Contracted Provider				68.76
220 Social Security Contributions				3,702.68
230 PSERS Retirement Contributions				17,698.72
270 Group Insurance – Self-Insurance				21,438.66
Total Personnel Services – Employee Benefits				\$42,908.82
500 <u>Other Purchased Services</u>				
580 Travel				24.94
Total Other Purchased Services				\$24.94
Total 2513 Receiving and Disbursing Funds Services				\$95,876.26

LEA : 123465303 Methacton SD

Printed 10/24/2019 11:17:42 AM

General Fund (10)

2514 Payroll Services

Elementary Secondary Federal Total

100 <u>Personnel Services – Salaries</u>				
100 Personnel Services – Salaries				47,911.50
Total Personnel Services – Salaries				\$47,911.50
200 <u>Personnel Services – Employee Benefits</u>				
210 Group Insurance – Contracted Provider				24.96
220 Social Security Contributions				3,521.12
230 PSERS Retirement Contributions				16,016.78
270 Group Insurance – Self-Insurance				7,540.92
Total Personnel Services – Employee Benefits				\$27,103.78
600 <u>Supplies</u>				
610 General Supplies				189.30
Total Supplies				\$189.30
Total 2514 Payroll Services				\$75,204.58

LEA : 123465303 Methacton SD

Printed 10/24/2019 11:17:42 AM

General Fund (10)

2515 Financial Accounting Services	<u>Elementary</u>	<u>Secondary</u>	<u>Federal</u>	<u>Total</u>
100 <u>Personnel Services – Salaries</u>				
100 Personnel Services – Salaries				112,461.02
Total Personnel Services – Salaries				\$112,461.02
200 <u>Personnel Services – Employee Benefits</u>				
210 Group Insurance – Contracted Provider				315.36
220 Social Security Contributions				8,273.92
230 PSERS Retirement Contributions				37,595.68
270 Group Insurance – Self-Insurance				18,502.44
Total Personnel Services – Employee Benefits				\$64,687.40
800 <u>Other Objects</u>				
810 Dues and Fees				8,879.84
Total Other Objects				\$8,879.84
Total 2515 Financial Accounting Services				\$186,028.26

LEA : 123465303 Methacton SD

Printed 10/24/2019 11:17:42 AM

General Fund (10)				
2519 Other Fiscal Services	<u>Elementary</u>	<u>Secondary</u>	<u>Federal</u>	<u>Total</u>
100 <u>Personnel Services – Salaries</u>				
100 Personnel Services – Salaries				94,110.31
Total Personnel Services – Salaries				\$94,110.31
200 <u>Personnel Services – Employee Benefits</u>				
210 Group Insurance – Contracted Provider				137.52
220 Social Security Contributions				6,571.53
230 PSERS Retirement Contributions				31,475.16
260 Workers' Compensation				2,102.47
270 Group Insurance – Self-Insurance				35,190.72
Total Personnel Services – Employee Benefits				\$75,477.40
300 <u>Purchased Professional and Technical Services</u>				
330 Other Professional Services				17,811.43
Total Purchased Professional and Technical Services				\$17,811.43
500 <u>Other Purchased Services</u>				
530 Communications				1,162.19
Total Other Purchased Services				\$1,162.19
600 <u>Supplies</u>				
610 General Supplies				2,302.13
Total Supplies				\$2,302.13
800 <u>Other Objects</u>				
810 Dues and Fees				4,317.50
Total Other Objects				\$4,317.50
Total 2519 Other Fiscal Services				\$195,180.96

LEA : 123465303 Methacton SD

Printed 10/24/2019 11:17:42 AM

General Fund (10)

2590 Other Support Services – Business	<u>Elementary</u>	<u>Secondary</u>	<u>Federal</u>	<u>Total</u>
400 <u>Purchased Property Services</u>				
440 Rentals				38,420.00
Total Purchased Property Services				\$38,420.00
500 <u>Other Purchased Services</u>				
520 Insurance – General				207,843.75
530 Communications				10,146.80
Total Other Purchased Services				\$217,990.55
600 <u>Supplies</u>				
610 General Supplies				269.04
Total Supplies				\$269.04
Total 2590 Other Support Services – Business				\$256,679.59

LEA : 123465303 Methacton SD

Printed 10/24/2019 11:17:42 AM

General Fund (10)				
2600 Operation and Maintenance of Plant Services	<u>Elementary</u>	<u>Secondary</u>	<u>Federal</u>	<u>Total</u>
100 <u>Personnel Services – Salaries</u>				
100 Personnel Services – Salaries				3,222,402.29
Total Personnel Services – Salaries				\$3,222,402.29
200 <u>Personnel Services – Employee Benefits</u>				
210 Group Insurance – Contracted Provider				4,978.38
220 Social Security Contributions				236,898.29
230 PSERS Retirement Contributions				1,062,539.48
260 Workers' Compensation				14,221.86
270 Group Insurance – Self-Insurance				565,089.54
299 All Other Employee Benefits				1,325.00
Total Personnel Services – Employee Benefits				\$1,885,052.55
300 <u>Purchased Professional and Technical Services</u>				
330 Other Professional Services				25,939.21
390 Other Purchased Professional and Technical Services				176,039.48
Total Purchased Professional and Technical Services				\$201,978.69
400 <u>Purchased Property Services</u>				
410 Cleaning Services				75,228.90
420 Utility Services				167,703.22
430 Repairs and Maintenance Services				951,293.98
440 Rentals				47,560.66
460 Extermination Services				8,886.25
Total Purchased Property Services				\$1,250,673.01
500 <u>Other Purchased Services</u>				
530 Communications				67,805.29
580 Travel				1,811.78
Total Other Purchased Services				\$69,617.07
600 <u>Supplies</u>				
610 General Supplies	171,887.05	183,550.66		355,437.71
620 Energy				1,130,856.66
Total Supplies				\$1,486,294.37
700 <u>Property</u>				
752 Capital Equipment – Original and Additional				7,434.10
762 Capitalized Equipment - Replacement				37,545.06
Total Property				\$44,979.16
800 <u>Other Objects</u>				
810 Dues and Fees				14,443.00
Total Other Objects				\$14,443.00
Total 2600 Operation and Maintenance of Plant Services	\$171,887.05	\$183,550.66		\$8,175,440.14

LEA : 123465303 Methacton SD

Printed 10/24/2019 11:17:42 AM

General Fund (10)

2610 Supervision of Operation and Maintenance of Plant Services	<u>Elementary</u>	<u>Secondary</u>	<u>Federal</u>	<u>Total</u>
100 <u>Personnel Services – Salaries</u>				
100 Personnel Services – Salaries				286,219.59
Total Personnel Services – Salaries				\$286,219.59
200 <u>Personnel Services – Employee Benefits</u>				
210 Group Insurance – Contracted Provider				699.48
220 Social Security Contributions				20,721.24
230 PSERS Retirement Contributions				94,326.56
270 Group Insurance – Self-Insurance				57,356.04
Total Personnel Services – Employee Benefits				\$173,103.32
500 <u>Other Purchased Services</u>				
580 Travel				294.24
Total Other Purchased Services				\$294.24
Total 2610 Supervision of Operation and Maintenance of Plant Services				\$459,617.15

LEA : 123465303 Methacton SD

Printed 10/24/2019 11:17:42 AM

General Fund (10)

2611 Supervision of Operation and Maintenance of Plant Services – Head of Component	<u>Elementary</u>	<u>Secondary</u>	<u>Federal</u>	<u>Total</u>
100 <u>Personnel Services – Salaries</u>				
100 Personnel Services – Salaries				187,812.61
Total Personnel Services – Salaries				\$187,812.61
200 <u>Personnel Services – Employee Benefits</u>				
210 Group Insurance – Contracted Provider				384.12
220 Social Security Contributions				13,477.64
230 PSERS Retirement Contributions				61,429.08
270 Group Insurance – Self-Insurance				39,959.76
Total Personnel Services – Employee Benefits				\$115,250.60
500 <u>Other Purchased Services</u>				
580 Travel				294.24
Total Other Purchased Services				\$294.24
Total 2611 Supervision of Operation and Maintenance of Plant Services – Head of Component				\$303,357.45

LEA : 123465303 Methacton SD

Printed 10/24/2019 11:17:42 AM

General Fund (10)

2619 Supervision of Operation and Maintenance of Plant Services – All Other Supervision	<u>Elementary</u>	<u>Secondary</u>	<u>Federal</u>	<u>Total</u>
100 <u>Personnel Services – Salaries</u>				
100 Personnel Services – Salaries				98,406.98
Total Personnel Services – Salaries				\$98,406.98
200 <u>Personnel Services – Employee Benefits</u>				
210 Group Insurance – Contracted Provider				315.36
220 Social Security Contributions				7,243.60
230 PSERS Retirement Contributions				32,897.48
270 Group Insurance – Self-Insurance				17,396.28
Total Personnel Services – Employee Benefits				\$57,852.72
Total 2619 Supervision of Operation and Maintenance of Plant Services – All Other Supervision				\$156,259.70

LEA : 123465303 Methacton SD

Printed 10/24/2019 11:17:42 AM

General Fund (10)				
2620 Operation of Buildings Services	<u>Elementary</u>	<u>Secondary</u>	<u>Federal</u>	<u>Total</u>
100 <u>Personnel Services – Salaries</u>				
100 Personnel Services – Salaries				2,642,734.50
Total Personnel Services – Salaries				\$2,642,734.50
200 <u>Personnel Services – Employee Benefits</u>				
210 Group Insurance – Contracted Provider				4,047.66
220 Social Security Contributions				194,640.12
230 PSERS Retirement Contributions				870,547.46
260 Workers' Compensation				14,221.86
270 Group Insurance – Self-Insurance				443,149.02
299 All Other Employee Benefits				1,325.00
Total Personnel Services – Employee Benefits				\$1,527,931.12
300 <u>Purchased Professional and Technical Services</u>				
330 Other Professional Services				25,939.21
Total Purchased Professional and Technical Services				\$25,939.21
400 <u>Purchased Property Services</u>				
410 Cleaning Services				61,891.95
420 Utility Services				167,703.22
430 Repairs and Maintenance Services				855,862.76
440 Rentals				2,531.51
460 Extermination Services				734.50
Total Purchased Property Services				\$1,088,723.94
500 <u>Other Purchased Services</u>				
530 Communications				67,805.29
Total Other Purchased Services				\$67,805.29
600 <u>Supplies</u>				
610 General Supplies	136,739.48	141,036.04		277,775.52
620 Energy				1,130,856.66
Total Supplies	\$136,739.48	\$141,036.04		\$1,408,632.18
800 <u>Other Objects</u>				
810 Dues and Fees				245.00
Total Other Objects				\$245.00
Total 2620 Operation of Buildings Services	\$136,739.48	\$141,036.04		\$6,762,011.24

LEA : 123465303 Methacton SD

Printed 10/24/2019 11:17:42 AM

General Fund (10)				
2630 Care and Upkeep of Grounds Services	<u>Elementary</u>	<u>Secondary</u>	<u>Federal</u>	<u>Total</u>
100 <u>Personnel Services – Salaries</u>				
100 Personnel Services – Salaries				293,448.20
Total Personnel Services – Salaries				\$293,448.20
200 <u>Personnel Services – Employee Benefits</u>				
210 Group Insurance – Contracted Provider				231.24
220 Social Security Contributions				21,536.93
230 PSERS Retirement Contributions				97,665.46
270 Group Insurance – Self-Insurance				64,584.48
Total Personnel Services – Employee Benefits				\$184,018.11
400 <u>Purchased Property Services</u>				
410 Cleaning Services				12,555.00
430 Repairs and Maintenance Services				43,326.74
Total Purchased Property Services				\$55,881.74
600 <u>Supplies</u>				
610 General Supplies	26,345.19	30,704.76		57,049.95
Total Supplies				\$57,049.95
700 <u>Property</u>				
762 Capitalized Equipment - Replacement				4,059.00
Total Property				\$4,059.00
Total 2630 Care and Upkeep of Grounds Services	\$26,345.19	\$30,704.76		\$594,457.00

LEA : 123465303 Methacton SD

Printed 10/24/2019 11:17:42 AM

General Fund (10)

2640 Care and Upkeep of Equipment Services	<u>Elementary</u>	<u>Secondary</u>	<u>Federal</u>	<u>Total</u>
400 <u>Purchased Property Services</u>				
430 Repairs and Maintenance Services				26,830.65
440 Rentals				28,653.00
Total Purchased Property Services				\$55,483.65
600 <u>Supplies</u>				
610 General Supplies	6,968.09	10,047.49		17,015.58
Total Supplies	\$6,968.09	\$10,047.49		\$17,015.58
700 <u>Property</u>				
752 Capital Equipment – Original and Additional				3,952.50
762 Capitalized Equipment - Replacement				33,486.06
Total Property				\$37,438.56
Total 2640 Care and Upkeep of Equipment Services	\$6,968.09	\$10,047.49		\$109,937.79

LEA : 123465303 Methacton SD

Printed 10/24/2019 11:17:42 AM

General Fund (10)

2650 Vehicle Operation and Maintenance Services (Other Than Student Transportation Vehicles)	<u>Elementary</u>	<u>Secondary</u>	<u>Federal</u>	<u>Total</u>
400 <u>Purchased Property Services</u>				
430 Repairs and Maintenance Services				20,316.01
Total Purchased Property Services				\$20,316.01
600 <u>Supplies</u>				
610 General Supplies	951.49	914.18		1,865.67
Total Supplies	\$951.49	\$914.18		\$1,865.67
Total 2650 Vehicle Operation and Maintenance Services (Other Than Student Transportation Vehicles)	\$951.49	\$914.18		\$22,181.68

LEA : 123465303 Methacton SD

Printed 10/24/2019 11:17:42 AM

General Fund (10)				
2690 Other Operation and Maintenance of Plant Services	<u>Elementary</u>	<u>Secondary</u>	<u>Federal</u>	<u>Total</u>
300 <u>Purchased Professional and Technical Services</u>				
390 Other Purchased Professional and Technical Services				176,039.48
Total Purchased Professional and Technical Services				\$176,039.48
400 <u>Purchased Property Services</u>				
410 Cleaning Services				781.95
430 Repairs and Maintenance Services				4,957.82
440 Rentals				16,376.15
460 Extermination Services				8,151.75
Total Purchased Property Services				\$30,267.67
500 <u>Other Purchased Services</u>				
580 Travel				1,517.54
Total Other Purchased Services				\$1,517.54
600 <u>Supplies</u>				
610 General Supplies	882.80	848.19		1,730.99
Total Supplies	\$882.80	\$848.19		\$1,730.99
700 <u>Property</u>				
752 Capital Equipment – Original and Additional				3,481.60
Total Property				\$3,481.60
800 <u>Other Objects</u>				
810 Dues and Fees				14,198.00
Total Other Objects				\$14,198.00
Total 2690 Other Operation and Maintenance of Plant Services	\$882.80	\$848.19		\$227,235.28

LEA : 123465303 Methacton SD

Printed 10/24/2019 11:17:42 AM

General Fund (10)				
2700 Student Transportation Services	<u>Elementary</u>	<u>Secondary</u>	<u>Federal</u>	<u>Total</u>
100 <u>Personnel Services – Salaries</u>				
100 Personnel Services – Salaries				205,379.36
Total Personnel Services – Salaries				\$205,379.36
200 <u>Personnel Services – Employee Benefits</u>				
210 Group Insurance – Contracted Provider				383.32
220 Social Security Contributions				14,788.20
230 PSERS Retirement Contributions				68,304.81
270 Group Insurance – Self-Insurance				64,340.76
Total Personnel Services – Employee Benefits				\$147,817.09
300 <u>Purchased Professional and Technical Services</u>				
330 Other Professional Services				18.00
Total Purchased Professional and Technical Services				\$18.00
500 <u>Other Purchased Services</u>				
513 Contracted Carriers			674.44	6,363,416.70
516 Student Transportation Services From the IU				645,784.96
519 Student Transportation Services From Other Sources				3,756.70
580 Travel				39.68
Total Other Purchased Services			\$674.44	\$7,012,998.04
600 <u>Supplies</u>				
610 General Supplies				879.80
620 Energy				103,923.17
Total Supplies				\$104,802.97
Total 2700 Student Transportation Services			\$674.44	\$7,471,015.46

LEA : 123465303 Methacton SD

Printed 10/24/2019 11:17:42 AM

General Fund (10)				
2720 Vehicle Operation Services				
	<u>Elementary</u>	<u>Secondary</u>	<u>Federal</u>	<u>Total</u>
100 <u>Personnel Services – Salaries</u>				
100 Personnel Services – Salaries				173,079.80
Total Personnel Services – Salaries				\$173,079.80
200 <u>Personnel Services – Employee Benefits</u>				
210 Group Insurance – Contracted Provider				336.79
220 Social Security Contributions				12,444.47
230 PSERS Retirement Contributions				57,549.96
270 Group Insurance – Self-Insurance				56,531.26
Total Personnel Services – Employee Benefits				\$126,862.48
500 <u>Other Purchased Services</u>				
513 Contracted Carriers			674.44	5,357,053.53
516 Student Transportation Services From the IU				567,401.44
519 Student Transportation Services From Other Sources				137.68
580 Travel				34.86
Total Other Purchased Services			\$674.44	\$5,924,627.51
600 <u>Supplies</u>				
610 General Supplies				773.01
620 Energy				91,309.27
Total Supplies				\$92,082.28
Total 2720 Vehicle Operation Services			\$674.44	\$6,316,652.07

LEA : 123465303 Methacton SD

Printed 10/24/2019 11:17:42 AM

General Fund (10)

2730 Monitoring Services

	<u>Elementary</u>	<u>Secondary</u>	<u>Federal</u>	<u>Total</u>
100 <u>Personnel Services – Salaries</u>				
100 Personnel Services – Salaries				8,389.50
Total Personnel Services – Salaries				\$8,389.50
200 <u>Personnel Services – Employee Benefits</u>				
220 Social Security Contributions				624.59
230 PSERS Retirement Contributions				2,804.63
Total Personnel Services – Employee Benefits				\$3,429.22
Total 2730 Monitoring Services				\$11,818.72

LEA : 123465303 Methacton SD

Printed 10/24/2019 11:17:42 AM

General Fund (10)

2740 Vehicle Servicing and Maintenance Services

Elementary

Secondary

Federal

Total

500 Other Purchased Services

513 Contracted Carriers

234,071.78

Total Other Purchased Services

\$234,071.78

Total 2740 Vehicle Servicing and Maintenance Services

\$234,071.78

LEA : 123465303 Methacton SD

Printed 10/24/2019 11:17:42 AM

General Fund (10)				
2750 Nonpublic Transportation	<u>Elementary</u>	<u>Secondary</u>	<u>Federal</u>	<u>Total</u>
100 <u>Personnel Services – Salaries</u>				
100 Personnel Services – Salaries				23,910.06
Total Personnel Services – Salaries				\$23,910.06
200 <u>Personnel Services – Employee Benefits</u>				
210 Group Insurance – Contracted Provider				46.53
220 Social Security Contributions				1,719.14
230 PSERS Retirement Contributions				7,950.22
270 Group Insurance – Self-Insurance				7,809.50
Total Personnel Services – Employee Benefits				\$17,525.39
300 <u>Purchased Professional and Technical Services</u>				
330 Other Professional Services				2.18
Total Purchased Professional and Technical Services				\$2.18
500 <u>Other Purchased Services</u>				
513 Contracted Carriers				772,291.39
516 Student Transportation Services From the IU				78,383.52
519 Student Transportation Services From Other Sources				455.98
580 Travel				4.82
Total Other Purchased Services				\$851,135.71
600 <u>Supplies</u>				
610 General Supplies				106.79
620 Energy				12,613.90
Total Supplies				\$12,720.69
Total 2750 Nonpublic Transportation				\$905,294.03

LEA : 123465303 Methacton SD

Printed 10/24/2019 11:17:42 AM

General Fund (10)

2790 Other Student Transportation Services	<u>Elementary</u>	<u>Secondary</u>	<u>Federal</u>	<u>Total</u>
300 <u>Purchased Professional and Technical Services</u>				
330 Other Professional Services				15.82
Total Purchased Professional and Technical Services				\$15.82
500 <u>Other Purchased Services</u>				
519 Student Transportation Services From Other Sources				3,163.04
Total Other Purchased Services				\$3,163.04
Total 2790 Other Student Transportation Services				\$3,178.86

LEA : 123465303 Methacton SD

Printed 10/24/2019 11:17:42 AM

General Fund (10)				
2800 Support Services – Central				
	<u>Elementary</u>	<u>Secondary</u>	<u>Federal</u>	<u>Total</u>
100 <u>Personnel Services – Salaries</u>				
100 Personnel Services – Salaries				759,214.45
Total Personnel Services – Salaries				\$759,214.45
200 <u>Personnel Services – Employee Benefits</u>				
210 Group Insurance – Contracted Provider				996.76
220 Social Security Contributions				53,918.25
230 PSERS Retirement Contributions				243,142.04
240 Tuition Reimbursement				29,145.00
260 Workers' Compensation				3,129.19
270 Group Insurance – Self-Insurance				136,815.12
Total Personnel Services – Employee Benefits				\$467,146.36
300 <u>Purchased Professional and Technical Services</u>				
360 Employee Training and Development Services			1,875.00	22,708.58
Total Purchased Professional and Technical Services			\$1,875.00	\$22,708.58
400 <u>Purchased Property Services</u>				
430 Repairs and Maintenance Services				62,623.85
440 Rentals				136,374.06
Total Purchased Property Services				\$198,997.91
500 <u>Other Purchased Services</u>				
530 Communications				52,219.87
580 Travel				2,456.57
Total Other Purchased Services				\$54,676.44
600 <u>Supplies</u>				
610 General Supplies				89,389.15
650 Supplies & Fees – Technology Related				281,431.82
Total Supplies				\$370,820.97
700 <u>Property</u>				
752 Capital Equipment – Original and Additional				79,292.01
762 Capitalized Equipment - Replacement				61,149.70
Total Property				\$140,441.71
800 <u>Other Objects</u>				
810 Dues and Fees			100.00	679.00
Total Other Objects			\$100.00	\$679.00
Total 2800 Support Services – Central			\$1,975.00	\$2,014,685.42

LEA : 123465303 Methacton SD

Printed 10/24/2019 11:17:42 AM

General Fund (10)				
2810 Planning, Research, Development and Evaluation Services	<u>Elementary</u>	<u>Secondary</u>	<u>Federal</u>	<u>Total</u>
100 <u>Personnel Services – Salaries</u>				
100 Personnel Services – Salaries				759,214.45
Total Personnel Services – Salaries				\$759,214.45
200 <u>Personnel Services – Employee Benefits</u>				
210 Group Insurance – Contracted Provider				996.76
220 Social Security Contributions				53,918.25
230 PSERS Retirement Contributions				243,142.04
260 Workers' Compensation				3,129.19
270 Group Insurance – Self-Insurance				136,815.12
Total Personnel Services – Employee Benefits				\$438,001.36
400 <u>Purchased Property Services</u>				
430 Repairs and Maintenance Services				62,623.85
Total Purchased Property Services				\$62,623.85
500 <u>Other Purchased Services</u>				
530 Communications				30.05
580 Travel				2,456.57
Total Other Purchased Services				\$2,486.62
600 <u>Supplies</u>				
610 General Supplies				77,437.15
650 Supplies & Fees – Technology Related				281,431.82
Total Supplies				\$358,868.97
700 <u>Property</u>				
752 Capital Equipment – Original and Additional				79,292.01
762 Capitalized Equipment - Replacement				61,149.70
Total Property				\$140,441.71
800 <u>Other Objects</u>				
810 Dues and Fees				579.00
Total Other Objects				\$579.00
Total 2810 Planning, Research, Development and Evaluation Services				\$1,762,215.96

LEA : 123465303 Methacton SD

Printed 10/24/2019 11:17:42 AM

General Fund (10)

2830 Staff Services

	<u>Elementary</u>	<u>Secondary</u>	<u>Federal</u>	<u>Total</u>
200 <u>Personnel Services – Employee Benefits</u>				
240 Tuition Reimbursement				29,145.00
Total Personnel Services – Employee Benefits				\$29,145.00
300 <u>Purchased Professional and Technical Services</u>				
360 Employee Training and Development Services			1,875.00	22,708.58
Total Purchased Professional and Technical Services			\$1,875.00	\$22,708.58
Total 2830 Staff Services			\$1,875.00	\$51,853.58

LEA : 123465303 Methacton SD

Printed 10/24/2019 11:17:42 AM

General Fund (10)

2834 Staff Development Services – Non-Instructional, Certified Staff Only	<u>Elementary</u>	<u>Secondary</u>	<u>Federal</u>	<u>Total</u>
200 <u>Personnel Services – Employee Benefits</u>				
240 Tuition Reimbursement				29,145.00
Total Personnel Services – Employee Benefits				\$29,145.00
300 <u>Purchased Professional and Technical Services</u>				
360 Employee Training and Development Services			1,500.00	19,149.58
Total Purchased Professional and Technical Services			\$1,500.00	\$19,149.58
Total 2834 Staff Development Services – Non-Instructional, Certified Staff Only			\$1,500.00	\$48,294.58

LEA : 123465303 Methacton SD

Printed 10/24/2019 11:17:42 AM

General Fund (10)

2836 Staff Development Services – Non-Instructional, Non-Certified Staff Only	<u>Elementary</u>	<u>Secondary</u>	<u>Federal</u>	<u>Total</u>
300 <u>Purchased Professional and Technical Services</u>				
360 Employee Training and Development Services			375.00	3,559.00
Total Purchased Professional and Technical Services			\$375.00	\$3,559.00
Total 2836 Staff Development Services – Non-Instructional, Non-Certified Staff Only			\$375.00	\$3,559.00

LEA : 123465303 Methacton SD

Printed 10/24/2019 11:17:42 AM

General Fund (10)

2840 Data Processing Services	<u>Elementary</u>	<u>Secondary</u>	<u>Federal</u>	<u>Total</u>
400 <u>Purchased Property Services</u>				
440 Rentals				136,374.06
Total Purchased Property Services				\$136,374.06
600 <u>Supplies</u>				
610 General Supplies				11,952.00
Total Supplies				\$11,952.00
Total 2840 Data Processing Services				\$148,326.06

LEA : 123465303 Methacton SD

Printed 10/24/2019 11:17:42 AM

General Fund (10)

2850 State and Federal Agency Liaison Services	<u>Elementary</u>	<u>Secondary</u>	<u>Federal</u>	<u>Total</u>
800 <u>Other Objects</u>				
810 Dues and Fees			100.00	100.00
Total Other Objects			\$100.00	\$100.00
Total 2850 State and Federal Agency Liaison Services			\$100.00	\$100.00

LEA : 123465303 Methacton SD

Printed 10/24/2019 11:17:42 AM

General Fund (10)

2890 Other Support Services Central	<u>Elementary</u>	<u>Secondary</u>	<u>Federal</u>	<u>Total</u>
500 <u>Other Purchased Services</u>				
530 Communications				52,189.82
Total Other Purchased Services				\$52,189.82
Total 2890 Other Support Services Central				\$52,189.82

LEA : 123465303 Methacton SD

Printed 10/24/2019 11:17:42 AM

General Fund (10)

2900 Other Support Services

Elementary Secondary Federal Total

500 Other Purchased Services

595 IU Payments By Withholding 67,838.45

596 Direct Payments To Intermediate Units 5,202.84

Total Other Purchased Services \$73,041.29

Total 2900 Other Support Services \$73,041.29

LEA : 123465303 Methacton SD

Printed 10/24/2019 11:17:42 AM

General Fund (10)

2910 Support Services Not Listed Elsewhere In the 2000 Series

Elementary Secondary Federal Total

500 <u>Other Purchased Services</u>				
595 IU Payments By Withholding				67,838.45
596 Direct Payments To Intermediate Units				5,202.84
Total Other Purchased Services				\$73,041.29
Total 2910 Support Services Not Listed Elsewhere In the 2000 Series				\$73,041.29

LEA : 123465303 Methacton SD

Printed 10/24/2019 11:17:49 AM

General Fund (10)	
3000 Operation of Non-Instructional Services	<u>Total</u>
100 <u>Personnel Services – Salaries</u>	
100 Personnel Services – Salaries	830,290.04
Total Personnel Services – Salaries	\$830,290.04
200 <u>Personnel Services – Employee Benefits</u>	
210 Group Insurance – Contracted Provider	80.22
220 Social Security Contributions	62,232.26
230 PSERS Retirement Contributions	240,207.54
270 Group Insurance – Self-Insurance	20,527.92
Total Personnel Services – Employee Benefits	\$323,047.94
300 <u>Purchased Professional and Technical Services</u>	
323 Professional Educational Services – Other Educational Agencies	200.00
329 Professional Educational Services – Other	1,147.72
330 Other Professional Services	80,467.11
390 Other Purchased Professional and Technical Services	995.26
Total Purchased Professional and Technical Services	\$82,810.09
400 <u>Purchased Property Services</u>	
410 Cleaning Services	9,056.50
440 Rentals	4,312.00
Total Purchased Property Services	\$13,368.50
500 <u>Other Purchased Services</u>	
510 Student Transportation Services	1,572.43
520 Insurance – General	5,898.00
550 Printing and Binding	302.50
580 Travel	15,483.05
591 Services Purchased Locally	50,428.55
Total Other Purchased Services	\$73,684.53
600 <u>Supplies</u>	
610 General Supplies	140,694.56
630 Food	466.29
640 Books and Periodicals	128.00
650 Supplies & Fees – Technology Related	5,505.08
Total Supplies	\$146,793.93
700 <u>Property</u>	
762 Capitalized Equipment - Replacement	1,735.00
Total Property	\$1,735.00
800 <u>Other Objects</u>	
810 Dues and Fees	40,480.38
Total Other Objects	\$40,480.38
Total 3000 Operation of Non-Instructional Services	\$1,512,210.41

LEA : 123465303 Methacton SD

Printed 10/24/2019 11:17:49 AM

General Fund (10)				
3200 Student Activities	<u>Elementary</u>	<u>Secondary</u>	<u>Federal</u>	<u>Total</u>
100 <u>Personnel Services – Salaries</u>				
100 Personnel Services – Salaries				830,290.04
Total Personnel Services – Salaries				\$830,290.04
200 <u>Personnel Services – Employee Benefits</u>				
210 Group Insurance – Contracted Provider				80.22
220 Social Security Contributions				62,232.26
230 PSERS Retirement Contributions				240,207.54
270 Group Insurance – Self-Insurance				20,527.92
Total Personnel Services – Employee Benefits				\$323,047.94
300 <u>Purchased Professional and Technical Services</u>				
329 Professional Educational Services – Other				1,147.72
330 Other Professional Services				80,467.11
390 Other Purchased Professional and Technical Services				995.26
Total Purchased Professional and Technical Services				\$82,610.09
400 <u>Purchased Property Services</u>				
410 Cleaning Services				9,056.50
440 Rentals				4,312.00
Total Purchased Property Services				\$13,368.50
500 <u>Other Purchased Services</u>				
510 Student Transportation Services				1,572.43
520 Insurance – General				5,898.00
550 Printing and Binding				302.50
580 Travel				15,030.55
591 Services Purchased Locally				50,428.55
Total Other Purchased Services				\$73,232.03
600 <u>Supplies</u>				
610 General Supplies				140,101.56
650 Supplies & Fees – Technology Related				5,505.08
Total Supplies				\$145,606.64
700 <u>Property</u>				
762 Capitalized Equipment - Replacement				1,735.00
Total Property				\$1,735.00
800 <u>Other Objects</u>				
810 Dues and Fees				40,480.38
Total Other Objects				\$40,480.38
Total 3200 Student Activities				\$1,510,370.62

LEA : 123465303 Methacton SD

Printed 10/24/2019 11:17:49 AM

General Fund (10)

3300 Community Services

Elementary Secondary Federal Total

300 Purchased Professional and Technical Services

323 Professional Educational Services – Other Educational Agencies 200.00

Total Purchased Professional and Technical Services \$200.00

500 Other Purchased Services

580 Travel 452.50 452.50

Total Other Purchased Services \$452.50 \$452.50

600 Supplies

610 General Supplies 93.00 593.00

630 Food 283.02 466.29

640 Books and Periodicals 128.00

Total Supplies \$376.02 \$1,187.29

Total 3300 Community Services \$828.52 \$1,839.79

LEA : 123465303 Methacton SD

Printed 10/24/2019 11:18:01 AM

General Fund (10)

5000 Other Expenditures and Financing Uses		<u>Total</u>
800 <u>Other Objects</u>		
830 Interest		2,324,495.71
880 Refunds of Prior Years' Receipts		4,564.54
Total Other Objects		\$2,329,060.25
900 <u>Other Uses of Funds</u>		
910 Redemption of Principal		7,389,503.23
939 Other Fund Transfers		1,178,803.47
Total Other Uses of Funds		\$8,568,306.70
Total 5000 Other Expenditures and Financing Uses		\$10,897,366.95

LEA : 123465303 Methacton SD

Printed 10/24/2019 11:18:01 AM

General Fund (10)

5100 Debt Service / Other Expenditures and Financing Uses

Elementary Secondary Federal Total

800 <u>Other Objects</u>				
830 Interest				2,324,495.71
880 Refunds of Prior Years' Receipts				4,564.54
Total Other Objects				\$2,329,060.25
900 <u>Other Uses of Funds</u>				
910 Redemption of Principal				7,389,503.23
Total Other Uses of Funds				\$7,389,503.23
Total 5100 Debt Service / Other Expenditures and Financing Uses				\$9,718,563.48

LEA : 123465303 Methacton SD

Printed 10/24/2019 11:18:01 AM

General Fund (10)

5110 Debt Service	<u>Elementary</u>	<u>Secondary</u>	<u>Federal</u>	<u>Total</u>
800 <u>Other Objects</u>				
830 Interest				2,324,495.71
Total Other Objects				\$2,324,495.71
900 <u>Other Uses of Funds</u>				
910 Redemption of Principal				7,389,503.23
Total Other Uses of Funds				\$7,389,503.23
Total 5110 Debt Service				\$9,713,998.94

LEA : 123465303 Methacton SD

Printed 10/24/2019 11:18:01 AM

General Fund (10)

5130 Refund of Prior Year Revenues / Receipts	<u>Elementary</u>	<u>Secondary</u>	<u>Federal</u>	<u>Total</u>
800 <u>Other Objects</u>				
880 Refunds of Prior Years' Receipts				4,564.54
Total Other Objects				\$4,564.54
Total 5130 Refund of Prior Year Revenues / Receipts				\$4,564.54

LEA : 123465303 Methacton SD

Printed 10/24/2019 11:18:01 AM

General Fund (10)

5200 Interfund Transfers – Out	<u>Elementary</u>	<u>Secondary</u>	<u>Federal</u>	<u>Total</u>
900 <u>Other Uses of Funds</u>				
939 Other Fund Transfers				1,178,803.47
Total Other Uses of Funds				\$1,178,803.47
Total 5200 Interfund Transfers – Out				\$1,178,803.47

LEA : 123465303 Methacton SD

Printed 10/24/2019 11:18:01 AM

General Fund (10)

5230 Capital Projects Fund Transfers	<u>Elementary</u>	<u>Secondary</u>	<u>Federal</u>	<u>Total</u>
900 <u>Other Uses of Funds</u>				
939 Other Fund Transfers				1,176,694.92
Total Other Uses of Funds				\$1,176,694.92
Total 5230 Capital Projects Fund Transfers				\$1,176,694.92

LEA : 123465303 Methacton SD

Printed 10/24/2019 11:18:01 AM

General Fund (10)

5250 Enterprise Fund Transfers	<u>Elementary</u>	<u>Secondary</u>	<u>Federal</u>	<u>Total</u>
900 <u>Other Uses of Funds</u>				
939 Other Fund Transfers				2,108.55
Total Other Uses of Funds				\$2,108.55
Total 5250 Enterprise Fund Transfers				\$2,108.55

LEA : 123465303 Methacton SD

Printed 10/24/2019 11:17:46 AM

Other Capital Projects Fund (39)

2000 Support Services		<u>Total</u>
500 <u>Other Purchased Services</u>		
550 Printing and Binding		1,367.50
Total Other Purchased Services		\$1,367.50
800 <u>Other Objects</u>		
810 Dues and Fees		118.66
820 Claims and Judgments Against the LEA		290,000.00
Total Other Objects		\$290,118.66
Total 2000 Support Services		\$291,486.16

LEA : 123465303 Methacton SD

Printed 10/24/2019 11:17:46 AM

Other Capital Projects Fund (39)

2300 Support Services – Administration

Elementary Secondary Federal Total

500 <u>Other Purchased Services</u>				
550 Printing and Binding				1,367.50
Total Other Purchased Services				\$1,367.50
800 <u>Other Objects</u>				
810 Dues and Fees				118.66
820 Claims and Judgments Against the LEA				290,000.00
Total Other Objects				\$290,118.66
Total 2300 Support Services – Administration				\$291,486.16

LEA : 123465303 Methacton SD

Printed 10/24/2019 11:17:46 AM

Other Capital Projects Fund (39)

2310 Board Services	<u>Elementary</u>	<u>Secondary</u>	<u>Federal</u>	<u>Total</u>
500 <u>Other Purchased Services</u>				
550 Printing and Binding				1,367.50
Total Other Purchased Services				\$1,367.50
800 <u>Other Objects</u>				
810 Dues and Fees				118.66
820 Claims and Judgments Against the LEA				290,000.00
Total Other Objects				\$290,118.66
Total 2310 Board Services				\$291,486.16

LEA : 123465303 Methacton SD

Printed 10/24/2019 11:17:54 AM

Other Capital Projects Fund (39)

4000 Facilities Acquisition, Construction and Improvement Services

Total

300 Purchased Professional and Technical Services

330 Other Professional Services	640,652.82
---------------------------------	------------

Total Purchased Professional and Technical Services	\$640,652.82
--	---------------------

400 Purchased Property Services

430 Repairs and Maintenance Services	1,480.00
--------------------------------------	----------

450 Construction Services	5,806,112.33
---------------------------	--------------

Total Purchased Property Services	\$5,807,592.33
--	-----------------------

500 Other Purchased Services

549 Other Advertising/Public Relations	6,798.00
--	----------

Total Other Purchased Services	\$6,798.00
---------------------------------------	-------------------

600 Supplies

610 General Supplies	511,899.00
----------------------	------------

Total Supplies	\$511,899.00
-----------------------	---------------------

700 Property

752 Capital Equipment – Original and Additional	41,882.10
---	-----------

762 Capitalized Equipment - Replacement	480,212.10
---	------------

Total Property	\$522,094.20
-----------------------	---------------------

Total 4000 Facilities Acquisition, Construction and Improvement Services	\$7,489,036.35
---	-----------------------

LEA : 123465303 Methacton SD

Printed 10/24/2019 11:17:54 AM

Other Capital Projects Fund (39)

4200 Existing Site Improvement Services	<u>Elementary</u>	<u>Secondary</u>	<u>Federal</u>	<u>Total</u>
300 <u>Purchased Professional and Technical Services</u>				
330 Other Professional Services				13,926.50
Total Purchased Professional and Technical Services				\$13,926.50
400 <u>Purchased Property Services</u>				
430 Repairs and Maintenance Services				1,480.00
450 Construction Services				29,382.00
Total Purchased Property Services				\$30,862.00
600 <u>Supplies</u>				
610 General Supplies				8,064.00
Total Supplies				\$8,064.00
700 <u>Property</u>				
752 Capital Equipment – Original and Additional				41,882.10
762 Capitalized Equipment - Replacement				106,220.00
Total Property				\$148,102.10
Total 4200 Existing Site Improvement Services				\$200,954.60

LEA : 123465303 Methacton SD

Printed 10/24/2019 11:17:54 AM

Other Capital Projects Fund (39)

4600 Existing Building Improvement Services	<u>Elementary</u>	<u>Secondary</u>	<u>Federal</u>	<u>Total</u>
300 <u>Purchased Professional and Technical Services</u>				
330 Other Professional Services				626,726.32
Total Purchased Professional and Technical Services				\$626,726.32
400 <u>Purchased Property Services</u>				
450 Construction Services				5,776,730.33
Total Purchased Property Services				\$5,776,730.33
500 <u>Other Purchased Services</u>				
549 Other Advertising/Public Relations				6,798.00
Total Other Purchased Services				\$6,798.00
600 <u>Supplies</u>				
610 General Supplies				503,835.00
Total Supplies				\$503,835.00
700 <u>Property</u>				
762 Capitalized Equipment - Replacement				373,992.10
Total Property				\$373,992.10
Total 4600 Existing Building Improvement Services				\$7,288,081.75

LEA : 123465303 Methacton SD

Printed 10/24/2019 11:18:03 AM

Other Capital Projects Fund (39)

5000 Other Expenditures and Financing Uses

Total

800 <u>Other Objects</u>	
830 Interest	13,544.67
Total Other Objects	\$13,544.67
Total 5000 Other Expenditures and Financing Uses	\$13,544.67

LEA : 123465303 Methacton SD

Printed 10/24/2019 11:18:03 AM

Other Capital Projects Fund (39)

5100 Debt Service / Other Expenditures and Financing Uses	<u>Elementary</u>	<u>Secondary</u>	<u>Federal</u>	<u>Total</u>
800 <u>Other Objects</u>				
830 Interest				13,544.67
Total Other Objects				\$13,544.67
Total 5100 Debt Service / Other Expenditures and Financing Uses				\$13,544.67

LEA : 123465303 Methacton SD

Printed 10/24/2019 11:18:03 AM

Other Capital Projects Fund (39)

5110 Debt Service	<u>Elementary</u>	<u>Secondary</u>	<u>Federal</u>	<u>Total</u>
800 <u>Other Objects</u>				
830 Interest				13,544.67
Total Other Objects				\$13,544.67
Total 5110 Debt Service				\$13,544.67

LEA : 123465303 Methacton SD

Printed 10/24/2019 11:18:21 AM

	<u>General Fund(10)</u>	<u>Public Purpose Trust(27)</u>	<u>Other Compt Approved</u> <u>(28)</u>	<u>Athletic / Activity(29)</u>	<u>Capital Reserve (690.</u> <u>1850)(31)</u>
1000 <u>Instruction</u>					
1100 Regular Programs - Elementary / Secondary	42,362,239.99				
1200 Special Programs - Elementary / Secondary	16,826,454.57				
1300 Vocational Education	2,474,977.10				
1400 Other Instructional Programs - Elementary / Secondary	493,567.79				
1500 Nonpublic School Programs	7,490.00				
1600 Adult Education Programs	140,691.02				
Total Instruction	\$62,305,420.47				
2000 <u>Support Services</u>					
2100 Support Services - Students	4,545,141.91				
2200 Support Services - Instructional Staff	2,534,507.38				
2300 Support Services - Administration	5,971,696.12				
2400 Support Services - Pupil Health	1,694,355.18				
2500 Support Services - Business	1,066,554.06				
2600 Operation and Maintenance of Plant Services	8,175,440.14				
2700 Student Transportation Services	7,471,015.46				
2800 Support Services - Central	2,014,685.42				
2900 Other Support Services	73,041.29				
Total Support Services	\$33,546,436.96				
3000 <u>Operation of Non-Instructional Services</u>					
3200 Student Activities	1,510,370.62				
3300 Community Services	1,839.79				
Total Operation of Non-Instructional Services	\$1,512,210.41				
4000 <u>Facilities Acquisition, Construction and Improvement Services</u>					
4200 Existing Site Improvement Services					
4600 Existing Building Improvement Services					
Total Facilities Acquisition, Construction and Improvement Services					
5000 <u>Other Expenditures and Financing Uses</u>					
5100 Debt Service / Other Expenditures and Financing Uses	9,718,563.48				
5200 Interfund Transfers - Out	1,178,803.47				
Total Other Expenditures and Financing Uses	\$10,897,366.95				
TOTAL ACTUAL EXPENDITURES & OTHER FINANCING USES	\$108,261,434.79				

LEA : 123465303 Methacton SD

Printed 10/24/2019 11:18:21 AM

	<u>Capital Reserve (1431)(32)</u>	<u>Other Capital Projects Fund(39)</u>	<u>Debt Service(40)</u>	<u>Permanent(90)</u>	<u>Total</u>
1000 Instruction					
1100 Regular Programs - Elementary / Secondary					42,362,239.99
1200 Special Programs - Elementary / Secondary					16,826,454.57
1300 Vocational Education					2,474,977.10
1400 Other Instructional Programs - Elementary / Secondary					493,567.79
1500 Nonpublic School Programs					7,490.00
1600 Adult Education Programs					140,691.02
Total Instruction					\$62,305,420.47
2000 Support Services					
2100 Support Services - Students					4,545,141.91
2200 Support Services - Instructional Staff					2,534,507.38
2300 Support Services - Administration		291,486.16			6,263,182.28
2400 Support Services - Pupil Health					1,694,355.18
2500 Support Services - Business					1,066,554.06
2600 Operation and Maintenance of Plant Services					8,175,440.14
2700 Student Transportation Services					7,471,015.46
2800 Support Services - Central					2,014,685.42
2900 Other Support Services					73,041.29
Total Support Services		\$291,486.16			\$33,837,923.12
3000 Operation of Non-Instructional Services					
3200 Student Activities					1,510,370.62
3300 Community Services					1,839.79
Total Operation of Non-Instructional Services					\$1,512,210.41
4000 Facilities Acquisition, Construction and Improvement Services					
4200 Existing Site Improvement Services		200,954.60			200,954.60
4600 Existing Building Improvement Services		7,288,081.75			7,288,081.75
Total Facilities Acquisition, Construction and Improvement Services		\$7,489,036.35			\$7,489,036.35
5000 Other Expenditures and Financing Uses					
5100 Debt Service / Other Expenditures and Financing Uses		13,544.67			9,732,108.15
5200 Interfund Transfers - Out					1,178,803.47
Total Other Expenditures and Financing Uses		\$13,544.67			\$10,910,911.62
TOTAL ACTUAL EXPENDITURES & OTHER FINANCING USES		\$7,794,067.18			\$116,055,501.97

LEA : 123465303 Methacton SD

Printed 10/24/2019 11:18:28 AM

PSERS Salary Data (Salary Data should relate to the General Fund only)

Amount	Description	Amount
	Total Salary Base for salaries subject to PSERS withholding	41,829,688.66
	Total Federally Funded salaries subject to PSERS withholding	1,156,574.03

Title I Expenditure Data

Amount	Description	Amount
	Expenditures Funded with Current Title I Funds	265,325.92
	Expenditures Funded with Carry over Title I Funds	27,589.93
Total	Title I Expenditure Data	\$292,915.85

Benefits for Staff Relative to Collective Bargaining Agreements

	OBJECT	COVERED	NOT COVERED	TOTAL
10 General Fund				
	211 Medical Insurance			
	212 Dental Insurance			
	215 Eye Care Insurance	30,128.18		30,128.18
	216 Prescription Insurance			
	271 Self-Insurance Medical Benefits	7,002,118.51		7,002,118.51
	272 Self-Insurance Dental Benefits	319,557.53		319,557.53
	275 Self-Insurance Eye Care Benefits			
	276 Self-Insurance Prescription Benefits	1,864,906.75		1,864,906.75
	FUND TOTAL	\$9,216,710.97		\$9,216,710.97
50 Enterprise Fund	No Self Insurance data to report			
	211 Medical Insurance			
	212 Dental Insurance			
	215 Eye Care Insurance			
	216 Prescription Insurance			
	271 Self-Insurance Medical Benefits			
	272 Self-Insurance Dental Benefits			
	275 Self-Insurance Eye Care Benefits			
	276 Self-Insurance Prescription Benefits			
	FUND TOTAL			
60 Internal Service Fund	No Self Insurance data to report			
	211 Medical Insurance			
	212 Dental Insurance			
	215 Eye Care Insurance			
	216 Prescription Insurance			
	271 Self-Insurance Medical Benefits			
	272 Self-Insurance Dental Benefits			
	275 Self-Insurance Eye Care Benefits			
	276 Self-Insurance Prescription Benefits			
	FUND TOTAL			
Total of All Funds		\$9,216,710.97		\$9,216,710.97

LEA : 123465303 Methacton SD

Printed 10/24/2019 11:18:33 AM

Function	Special Education (Prior Year)	Nonspecial Education (Prior Year)	Total (Prior Year)	Special Education (Current Year)	Nonspecial Education (Current Year)	Total (Current Year)
2120 Guidance Services	252,986.69	2,276,880.18	2,529,866.87	217,112.33	1,954,010.95	2,171,123.28
2140 Psychological Services	413,330.58	103,332.64	516,663.22	493,141.86	123,285.46	616,427.32
2150 Speech Pathology and Audiology Services						
2160 Social Work Services	10,218.50	194,151.50	204,370.00	20,120.00	382,280.00	402,400.00
2260 Instruction and Curriculum Development Services	25,811.16	490,412.13	516,223.29	28,021.45	532,407.57	560,429.02
2350 Legal and Accounting Services	109,211.88	323,685.88	432,897.76	100,724.09	258,993.96	359,718.05
2420 Medical Services	385,914.36	42,879.37	428,793.73	348,041.76	38,671.31	386,713.07
2440 Nursing Services	120,607.08	1,085,463.69	1,206,070.77	130,749.81	1,176,748.30	1,307,498.11
2700 Student Transportation Services	720,115.82	6,481,042.38	7,201,158.20	747,101.55	6,723,913.91	7,471,015.46
Total	\$2,038,196.07	\$10,997,847.77	\$13,036,043.84	\$2,085,012.85	\$11,190,311.46	\$13,275,324.31

LEA : 123465303 Methacton SD

Printed 10/24/2019 11:18:35 AM

(PRINCIPAL AMOUNTS ONLY)

GOVERNMENTAL FUNDS/ ACTIVITIES

	Short-Term Borrowing	General Obligation Bonds/Notes	Authority Building Obligations	Other Long-Term Debt	Other Post- Employment Benefits (OPEB)	Compensated Absences	Net Pension Liability	Total
1. Debt at Beginning of Fiscal Year		73,295,000.00		2,018,288.00	17,581,739.00	2,801,941.00	159,327,000.00	255,023,968.00
2. Additional Debt Incurred During Year								
3. Retirements and Repayments		7,235,000.00		154,503.00	13,826,179.00	72,423.00	8,303,000.00	29,591,105.00
4. Debt at End of Fiscal Year		66,060,000.00		1,863,785.00	3,755,560.00	2,729,518.00	151,024,000.00	225,432,863.00
5. Accreted Interest at End Of Fiscal Year								
6. Total Debt and Accreted Interest		66,060,000.00		1,863,785.00	3,755,560.00	2,729,518.00	151,024,000.00	225,432,863.00
7. Current Portion P&I - Due within 1 year		9,906,458.14		206,369.00		136,475.88		10,249,303.02
8. Interest Paid during current fiscal year		2,287,832.00		50,208.00				2,338,040.00

(PRINCIPAL AMOUNTS ONLY)

PROPRIETARY FUNDS

- 1. Debt at Beginning of Fiscal Year
- 2. Additional Debt Incurred During Year
- 3. Retirements and Repayments
- 4. Debt at End of Fiscal Year
- 5. Accreted Interest at End Of Fiscal Year
- 6. Total Debt and Accreted Interest
- 7. Current Portion P&I - Due within 1 year
- 8. Interest Paid during current fiscal year

LEA : 123465303 Methacton SD

Printed 10/24/2019 11:18:35 AM

Total Principal and Interest Payments Made by Your School - All Funds

Function	Fund		Principal (910)	Principal (920)	Interest (830)	Total (Principal +Interest)	Misc Other Uses (990)
5110	10	General Fund	7,389,503.23		2,324,495.71	9,713,998.94	
5110	20	Special Revenue Funds					
5110	30	Capital Projects Funds			13,544.67	13,544.67	
5110	40	Debt Service Fund					
5110	90	Permanent Fund					
5120	10	General Fund					
5120	20	Special Revenue Funds					
5120	30	Capital Projects Funds					
5120	40	Debt Service Fund					
Total Debt Payments - Governmental Funds			\$7,389,503.23		\$2,338,040.38	\$9,727,543.61	

Function	Fund		Principal (910)	Principal (920)	Interest (830)	Total (Principal +Interest)
5110	50	Enterprise Fund				
5110	60	Internal Service Fund				
5120	50	Enterprise Fund				
5120	60	Internal Service Fund				
Total Debt Payments - Proprietary Funds						

LEA : 123465303 Methacton SD

Printed 10/24/2019 11:18:35 AM

Debt Details
Governmental Funds/ Activities

Debt Category	Debt Issue Date (MM/YYYY)	Principal Amounts Only				Current Portion Due Within One Year (Principal and Interest)	Interest Paid During Fiscal Year
		Debt at Beginning of Fiscal Year	Additions	Reductions / Repayments	Debt at End of Fiscal Year		
General Obligation Bonds/Notes – CIB	06/2018	5,915,000.00		5,000.00	5,910,000.00	235,022.51	170,659.00
General Obligation Bonds/Notes – CIB	06/2018	5,400,000.00			5,400,000.00	179,735.00	133,303.00
General Obligation Bonds/Notes – CIB	12/2017	6,075,000.00		855,000.00	5,220,000.00	1,123,775.00	164,300.00
General Obligation Bonds/Notes – CIB	12/2017	8,500,000.00		40,000.00	8,460,000.00	255,163.75	240,558.00
General Obligation Bonds/Notes – CIB	06/2016	2,635,000.00		2,635,000.00			39,525.00
General Obligation Bonds/Notes – CIB	03/2016	27,895,000.00		50,000.00	27,845,000.00	6,622,800.00	1,153,350.00
General Obligation Bonds/Notes – CIB	05/2015	1,985,000.00		715,000.00	1,270,000.00	780,900.00	65,100.00
General Obligation Bonds/Notes – CIB	05/2015	1,535,000.00		230,000.00	1,305,000.00	213,012.50	43,925.00
General Obligation Bonds/Notes – CIB	06/2013	4,205,000.00		5,000.00	4,200,000.00	103,946.25	99,036.00
General Obligation Bonds/Notes – CIB	06/2013	2,515,000.00		5,000.00	2,510,000.00	80,653.13	75,726.00
General Obligation Bonds/Notes – CIB	12/2012	4,620,000.00		680,000.00	3,940,000.00	311,450.00	82,200.00
General Obligation Bonds/Notes – CIB	12/2012	2,015,000.00		2,015,000.00			20,150.00
Other Long Term Debt/Liabilities		2,018,288.00		154,503.00	1,863,785.00	206,369.00	50,208.00
Compensated Absences		2,801,941.00		72,423.00	2,729,518.00	136,475.88	
Other Post-Employment Benefits (OPEB)		17,581,739.00		13,826,179.00	3,755,560.00		
Net Pension Liability		159,327,000.00		8,303,000.00	151,024,000.00		
Totals for Debt Entered:		\$255,023,968.00		\$29,591,105.00	\$225,432,863.00	\$10,249,303.02	\$2,338,040.00

LEA : 123465303 Methacton SD

Printed 10/24/2019 11:18:38 AM

General Fund (10)

Section 1: Tuition/Purchased Services as Reported within Expenditure Detail	Amount
Tuition Reported in General Fund Expenditures 1000-560	3,864,285.66
Purchased Services in General Fund Expenditures 1000-594 and 1000-597	
Section 1 Total	\$3,864,285.66

Section 2: Tuition Paid to Institution Types During Fiscal Year	Tuition Paid For Nonspecial Education	Tuition Paid For Special Education	Total
1 1306 Institutions			
2 Institutionalized Children's Programs			
3 Juveniles Incarcerated in Adult Facilities			
4 Residential Treatment Facilities			
5 Other Local Education Agencies	173,820.77	47,165.92	220,986.69
6 Brick and Mortar Charter Schools	403,627.95	160,063.70	563,691.65
7 Cyber Charter Schools	465,386.51	244,608.16	709,994.67
8 Career and Technology Centers	1,304,698.67		1,304,698.67
9 Approved Private Schools		471,358.31	471,358.31
10 PA Chartered Schools for the Deaf and Blind			
11 Private Residential Rehabilitative Institutions	35,754.19	426,617.72	462,371.91
12 Juvenile Detention Centers	4,674.00		4,674.00
13 Special Program Jointures			
14 Other Tuition Not Included Elsewhere In This Section		126,509.76	126,509.76
Section 2 Total	\$2,387,962.09	\$1,476,323.57	\$3,864,285.66

LEA : 123465303 Methacton SD

Printed 10/24/2019 11:18:41 AM

Food Service / Cafeteria Operations Fund (51)

3000 Operation of Non-Instructional Services

Total

500	<u>Other Purchased Services</u>	
570	Food Service Management	1,388,772.99
Total Other Purchased Services		\$1,388,772.99
600	<u>Supplies</u>	
610	General Supplies	10,267.38
630	Food	80,218.04
Total Supplies		\$90,485.42
700	<u>Property</u>	
740	Depreciation	9,783.59
Total Property		\$9,783.59
Total 3000 Operation of Non-Instructional Services		\$1,489,042.00

LEA : 123465303 Methacton SD

Printed 10/24/2019 11:18:41 AM

Food Service / Cafeteria Operations Fund (51)

3100 Food Services	<u>Elementary</u>	<u>Secondary</u>	<u>Federal</u>	<u>Total</u>
500 <u>Other Purchased Services</u>				
570 Food Service Management				1,388,772.99
Total Other Purchased Services				\$1,388,772.99
600 <u>Supplies</u>				
610 General Supplies				10,267.38
630 Food				80,218.04
Total Supplies				\$90,485.42
700 <u>Property</u>				
740 Depreciation				9,783.59
Total Property				\$9,783.59
Total 3100 Food Services				\$1,489,042.00

	<u>Food Service(51)</u>	<u>Child Care Operations(52)</u>	<u>Other Enterprise(58)</u>	<u>Internal Service(60)</u>	<u>Total</u>
3000 <u>Operation of Non-Instructional Services</u>					
3100 Food Services	1,489,042.00				1,489,042.00
Total Operation of Non-Instructional Services	\$1,489,042.00				\$1,489,042.00
TOTAL ACTUAL EXPENDITURES & OTHER FINANCING USES	\$1,489,042.00				\$1,489,042.00

LEA : 123465303 Methacton SD

Printed 10/24/2019 11:18:56 AM

Fund	School	School Number	Local Personnel	Local Nonpersonnel	State Personnel	State Nonpersonnel	Federal Personnel	Federal Nonpersonnel	Total	Explanation
10										
	Arcola Intrmd Sch	6716	9,123,626.01	2,394,084.65	2,489,942.57	653,373.26	207,669.65	5,080.42	14,873,776.56	
	Arrowhead El Sch	6845	5,094,901.87	1,378,434.54	1,390,457.37	376,190.65	59,049.09	3,574.16	8,302,607.68	
	Eagleville El Sch	3303	4,731,713.92	1,304,570.32	1,291,339.20	356,032.26	169,831.34	4,190.27	7,857,677.31	
	Methacton HS	3305	17,550,050.88	4,810,438.22	4,789,610.92	1,312,823.97	357,930.36	11,064.76	28,831,919.11	
	Skyview Upper El Sch	8139	8,800,785.68	2,202,754.58	2,401,835.72	601,157.08	382,418.53	5,436.73	14,394,388.32	
	Woodland El Sch	5252	5,503,434.07	1,407,479.33	1,501,950.51	384,117.31	135,391.36	4,067.05	8,936,439.63	
	Worcester El Sch	7573	4,606,107.86	1,326,853.72	1,257,059.86	362,113.65	8,511.20	3,767.19	7,564,413.48	
Total			55,410,620.29	14,824,615.36	15,122,196.15	4,045,808.18	1,320,801.53	37,180.58	90,761,222.09	

LEA : 123465303 Methacton SD

Printed 10/24/2019 11:19:01 AM

	<u>Nonspecial Education</u>	<u>Special Education</u>
1000 Instruction		
1441 Adjudicated / Court-Placed Programs	73,871	231,105
Total Instruction	\$73,871	\$231,105
2000 Support Services		
2170 Student Accounting Services	1,162	3,636
2380 Office of the Principal Services	2,132	6,670
2540 Printing, Publishing and Duplicating Services	23	73
2836 Staff Development Services - Non-Instructional, Non-Certified Staff Only	4	12
Total Support Services	\$3,321	\$10,391
5000 Other Expenditures and Financing Uses		
5210 General Fund Transfers	2,316	7,245
Total Other Expenditures and Financing Uses	\$2,316	\$7,245
TOTAL EXPENDITURES	\$79,508	\$248,741

LEA : 123465303 Methacton SD

Printed 10/24/2019 11:19:06 AM

	Nonspecial Education	Special Education
1000 Instruction		
1400 <u>Other Instructional Programs - Elementary / Secondary</u>		
100 Personnel Services - Salaries	\$47,375	\$148,213
210 Group Insurance - Contracted Provider	\$6,050	\$18,929
220 Social Security Contributions	\$3,581	\$11,202
230 PSERS Retirement Contributions	\$15,837	\$49,548
250 Unemployment Compensation	\$138	\$432
260 Workers' Compensation	\$474	\$1,482
292 Health Savings Accounts	\$299	\$936
530 Communications	\$19	\$59
580 Travel	\$7	\$21
610 General Supplies	\$6	\$18
640 Books and Periodicals	\$85	\$265
Total Other Instructional Programs - Elementary / Secondary	\$73,871	\$231,105
Total Instruction	\$73,871	\$231,105
2000 Support Services		
2100 <u>Support Services - Students</u>		
100 Personnel Services - Salaries	\$730	\$2,284
210 Group Insurance - Contracted Provider	\$97	\$303
220 Social Security Contributions	\$55	\$172
230 PSERS Retirement Contributions	\$244	\$764
250 Unemployment Compensation	\$4	\$11
260 Workers' Compensation	\$7	\$23
292 Health Savings Accounts	\$8	\$25
580 Travel	\$17	\$54
Total Support Services - Students	\$1,162	\$3,636
2300 <u>Support Services - Administration</u>		
100 Personnel Services - Salaries	\$1,460	\$4,569
210 Group Insurance - Contracted Provider	\$33	\$104
220 Social Security Contributions	\$112	\$350
230 PSERS Retirement Contributions	\$488	\$1,527
250 Unemployment Compensation	\$7	\$23
260 Workers' Compensation	\$15	\$46
292 Health Savings Accounts	\$16	\$49
580 Travel	\$1	\$2
Total Support Services - Administration	\$2,132	\$6,670
2500 <u>Support Services - Business</u>		
550 Printing and Binding	\$23	\$73
Total Support Services - Business	\$23	\$73
2800 <u>Support Services - Central</u>		
360 Employee Training and Development Services	\$4	\$12
Total Support Services - Central	\$4	\$12
Total Support Services	\$3,321	\$10,391

LEA : 123465303 Methacton SD

Printed 10/24/2019 11:19:06 AM

	<u>Nonspecial Education</u>	<u>Special Education</u>
5000 Other Expenditures and Financing Uses		
5200 <u>Interfund Transfers - Out</u>		
939 Other Fund Transfers	\$2,316	\$7,245
Total Interfund Transfers - Out	\$2,316	\$7,245
Total Other Expenditures and Financing Uses	\$2,316	\$7,245
TOTAL EXPENDITURES	\$79,508	\$248,741

LEA : 123465303 Methacton SD

Printed 10/24/2019 11:19:09 AM

	<u>Nonspecial Education</u>	<u>Special Education</u>
7000 Revenue from State Sources		
Total Revenue from State Sources	\$10,159	\$31,781
Total	\$10,159	\$31,781
TOTAL REVENUES	\$10,159	\$31,781

LEA : 123465303 Methacton SD

Printed 10/24/2019 11:19:11 AM

	<u>Nonspecial Education</u>	<u>Special Education</u>
7000 Revenue from State Sources		
7810 State Share of Social Security and Medicare Taxes	1,874	5,862
7820 State Share of Retirement Contributions	8,285	25,919
Total Revenue from State Sources	\$10,159	\$31,781
TOTAL	\$10,159	\$31,781
TOTAL REVENUES	\$10,159	\$31,781